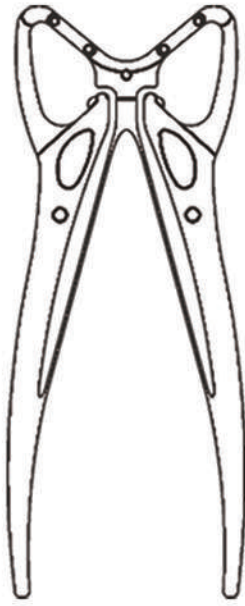


BlueSAO[®]



PRODUCTS

BLUESAO Co.,Ltd

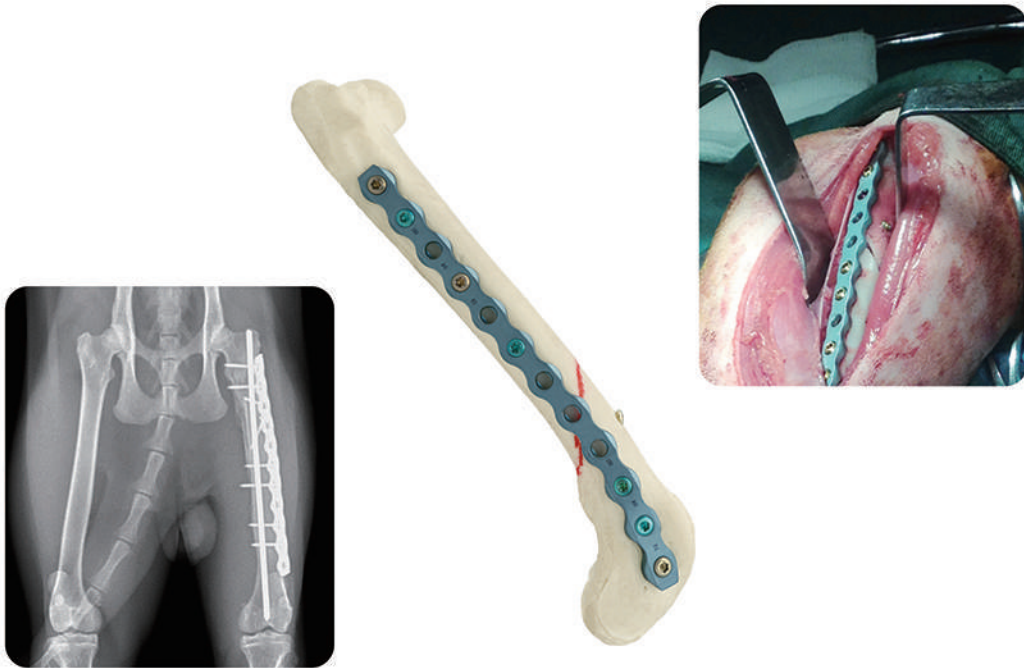
Company Profile

BLUESAO Co.,Ltd is a manufacturer of small animal orthopedic instruments. Most of our machining centers and CNC machines are imported from Japan, Switzerland and Taiwan, almost all the raw materials of our products come from Germany, Japan and Switzerland, in order to ensure our excellent technology and the best product quality. We established the first private veterinary orthopedic training base in China, the amount of vets we trained is the largest in China, so far over 2000 veterinarians. The amount of clinical cases we have is also the largest in China, BlueSAO brand is undoubtedly the first brand in Chinese animal orthopedic field. We will do our best to produce more and more advanced small animal orthopedic instruments for veterinaries from all over the world.



Contents

- 1.PRCL locking plate system
- 2.Hyprotect-PRCL locking plate
- 3.TPLO locking plate system
- 4.Micro&Nano Total Hip Replacement System
- 5.DPO bone plate system
- 6.Patella Groove Replacement system
- 7.Veterinary Spine Fixation System
- 8.Universal Laminectomy Rongeurs
- 9.Interlocking Nail system
- 10.Trochlea plasty instrument set
- 11.Broken screw removal set
- 12.JIG
- 13.MIO/MIPO Retractor
- 14.Canine Hip Dysplasia examination set
- 15.Accurate Location orthopedic instrument
- 16.Orthopedic general instrument
- 17.Intramedullary pin installation and removal set
- 18.Power Tool
- 19.Bone model



PRCL Locking Plate System

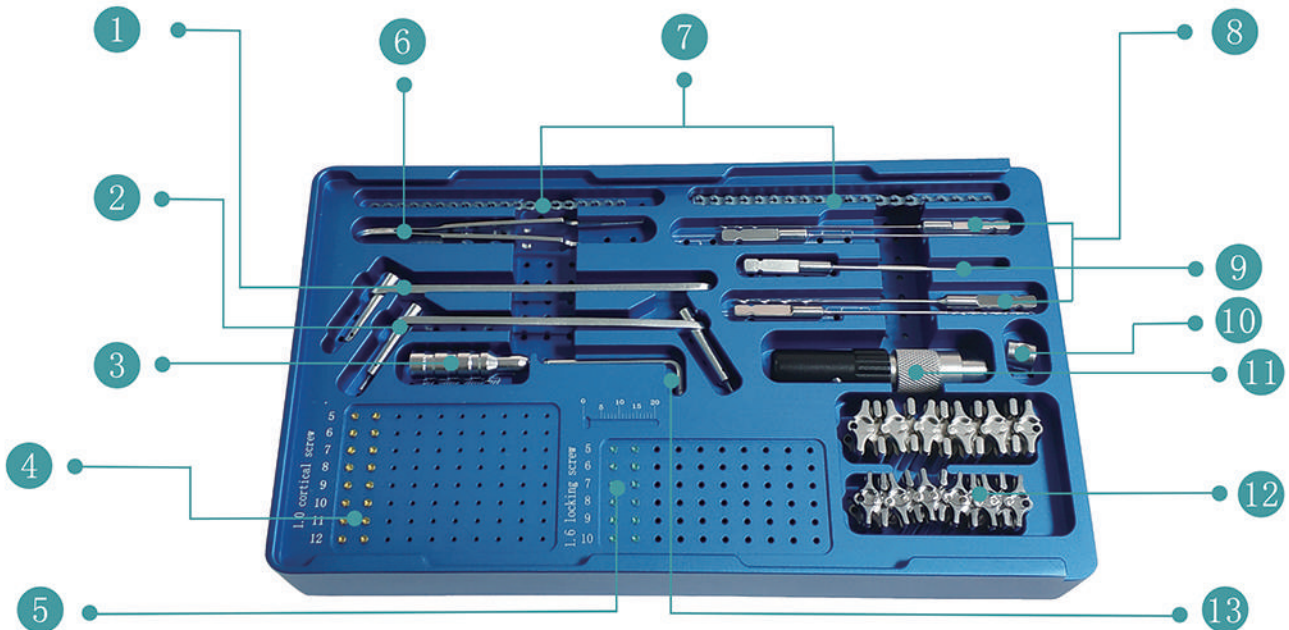
Point-contact

Reconstruction

Compression

Locking

PRCL-Mini



1: drill sleeve(compressed)

8: drill bit (quick coupling)

2: drill sleeve(neutral)

9: screwdriver (quick coupling)

3: drill sleeve(locking)

10: drill stop

4: cortical screw

11: screwdriver handle

5: locking screw

12: bending jig for in-plane bending

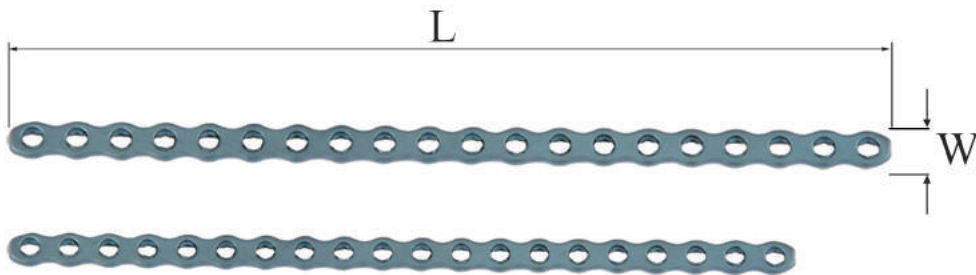
6: screw forceps

13: drill stop spanner

7: bone plate

PRCL-Mini

Implants

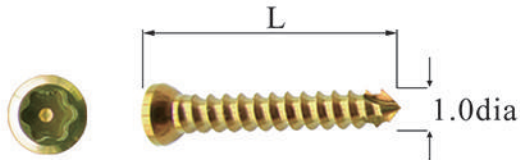


Bone plate material: titanium

Width	Length	Number of holes	Product Code
3.5mm	79.5mm	20holes	0100100035
4mm	89.5mm	20holes	0100100040

PRCL-Mini

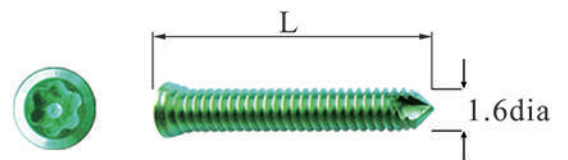
Implants



1.0mm Cortical screw

material: titanium alloy

Length	Product Code
5mm	0100201005
6mm	0100201006
7mm	0100201007
8mm	0100201008
9mm	0100201009
10mm	0100201010
11mm	0100201011
12mm	0100201012



1.6mm Locking screw

material: titanium alloy

Length	Product Code
5mm	0100301005
6mm	0100301006
7mm	0100301007
8mm	0100301008
9mm	0100301009
10mm	0100301010

PRCL-Mini

Tools



drill sleeve(neutral)

size : $\Phi 0.7 / \Phi 1.1$

Product Code: 0200502000



drill sleeve(compressed)

size : $\Phi 0.7$

Product Code: 0200602007



drill sleeve (locking)

size : $\Phi 1.1$

Product Code: 0200402011



drill bit (quick coupling)

size : $\Phi 0.7, \Phi 1.1$

Product Code: 0200102007, 0200102011



drill stop

size : $\Phi 1.1$

Product Code: 0200302011



drill stop spanner

size : Mini

Product Code: 0200302100



bending jig for in-plane bending

size : 3.5mm, 4mm

Product Code: 0200902001, 0200902002



AL bone holding forceps (flat head)

Product Code: 0301402006

PRCL-Mini

Tools



screwdriver (quick coupling)

size : Mini

Product Code: 0201102001



screwdriver handle

size : Mini

Product Code: 0201102011



screw forceps

size : Mini

Product Code: 0201202001



tray (holds instruments and implants)

size : Mini

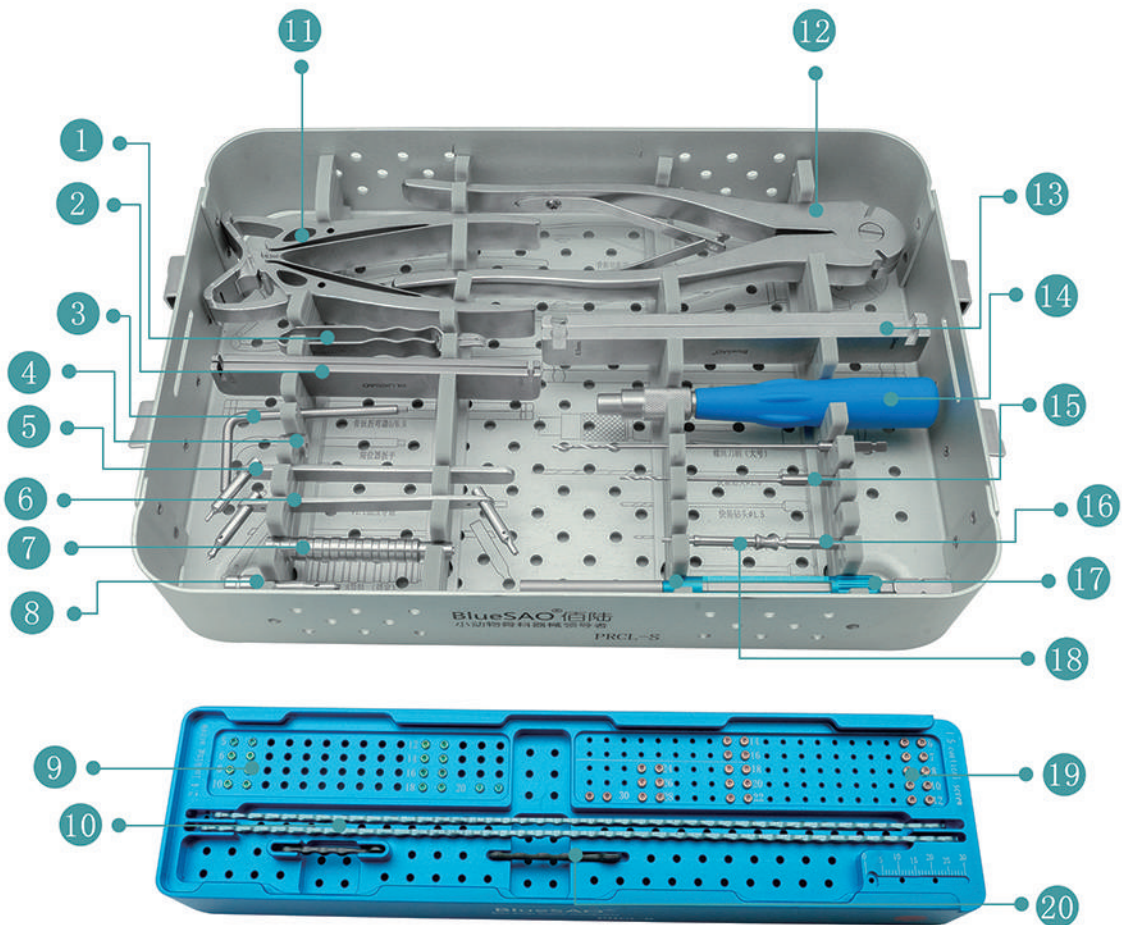
Product Code: 0202102001

Clinical case:

A Pomeranian dog,suffered from the metacarpus fracture,fixed with PRCL-Mini locking plates..



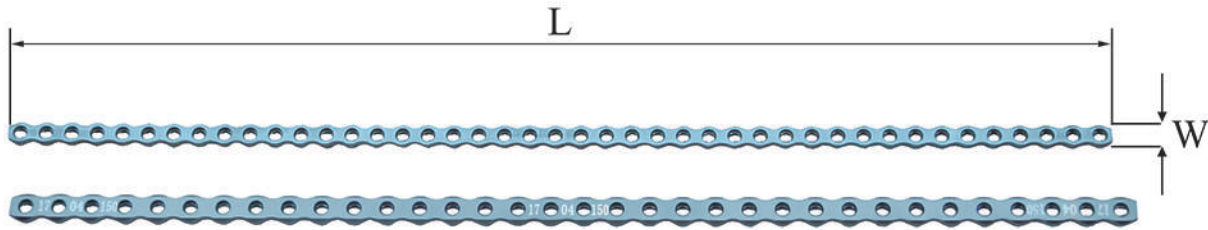
PRCL-S



- | | |
|--------------------------------|--|
| 1: screw forceps | 11: bending pliers for in-plane bending |
| 2: bending iron | 12: bone plate cutter |
| 3: drill stop spanner | 13: bending iron for in-plane (optional) |
| 4: drill stop | 14: screwdriver handle |
| 5: drill sleeve (compressed) | 15: drill bit (quick coupling) |
| 6: drill sleeve (neutral) | 16: screwdriver (quick coupling) |
| 7: drill sleeve (locking) | 17: depth gauge |
| 8: drill sleeve (screw-in) | 18: screw holder |
| 9: locking screw | 19: cortical screw |
| 10: bone plate | 20: T bone plate |

PRCL-S

Implants



Bone plate material: titanium

Width	Length	Number of holes	Product Code
5mm	236.5mm	43holes	0100100150
6.5mm	238mm	34holes	0100100165

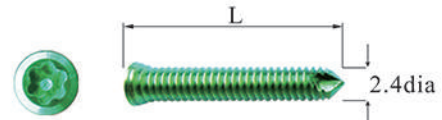


T Bone plate material: titanium

W1	W2	Length	Number of holes	Product Code
5mm	10.5mm	32.5mm	6holes	0100100550
6.5mm	13.5mm	41.5mm	6holes	0100100565

PRCL-S

Implants



1.5mm Cortical screw

material: titanium alloy

Length	Product Code
6mm	0100201106
7mm	0100201107
8mm	0100201108
10mm	0100201110
12mm	0100201112
14mm	0100201114
16mm	0100201116
18mm	0100201118
20mm	0100201120
22mm	0100201122
24mm	0100201124
26mm	0100201126
28mm	0100201128
30mm	0100201130

2.4mm Locking screw

material: titanium alloy

Length	Product Code
5mm	0100301105
6mm	0100301106
8mm	0100301108
10mm	0100301110
12mm	0100301112
14mm	0100301114
16mm	0100301116

PRCL-S

Tools



drill sleeve(neutral)

size : Φ 1. 1/ Φ 1. 5

Product Code: 0200502001



drill sleeve(compressed)

size : Φ 1. 1

Product Code: 0200602011



drill sleeve (screw-in)

size : Φ 1. 1

Product Code: 0200702011



drill sleeve (locking)

size : Φ 1. 8

Product Code: 0200402018



drill bit (quick coupling)

Product Code: 0200102011, 0200102015,
0200102018



drill bit (general)

size : Φ 1. 1, Φ 1. 5, Φ 1. 8
Product Code: 0200202011, 0200202015,
0200202018



drill stop

size : Φ 1. 8

Product Code: 0200302018



drill stop spanner

Product Code: 0200302101

PRCL-S

Tools



bending pliers for in-plane bending

size : 5mm/6.5mm

Product Code: 0200902003



bending iron for in-plane (optional)

size : 5mm/6.5mm

Product Code: 0200902011



bending iron

size : 5mm/6.5mm

Product Code: 0200802001



bone plate cutter

size : 5mm/6.5mm

Product Code: 0201002001



depth gauge

size : 40mm

Product Code: 0201302041



screw forceps

size : S

Product Code: 0201202002



screwdriver (quick coupling)

size : S

Product Code: 0201102002



screwdriver handle

Product Code: 0201102012

PRCL-S

Tools



screw holder

size : HC2. 4/1. 5

Product Code: 0207002415



multifunction bone plate cutter

size : 5/6. 5mm, 8/9mm

Product Code: 0201002004



tray (holds implants)

size : S

Product Code: 0202002001



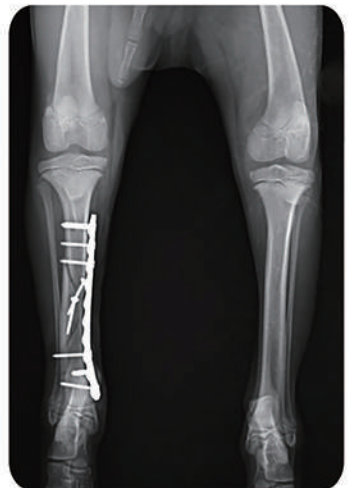
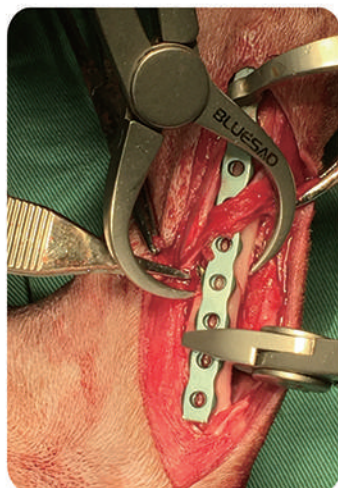
instrument container (holds instruments)

size : S

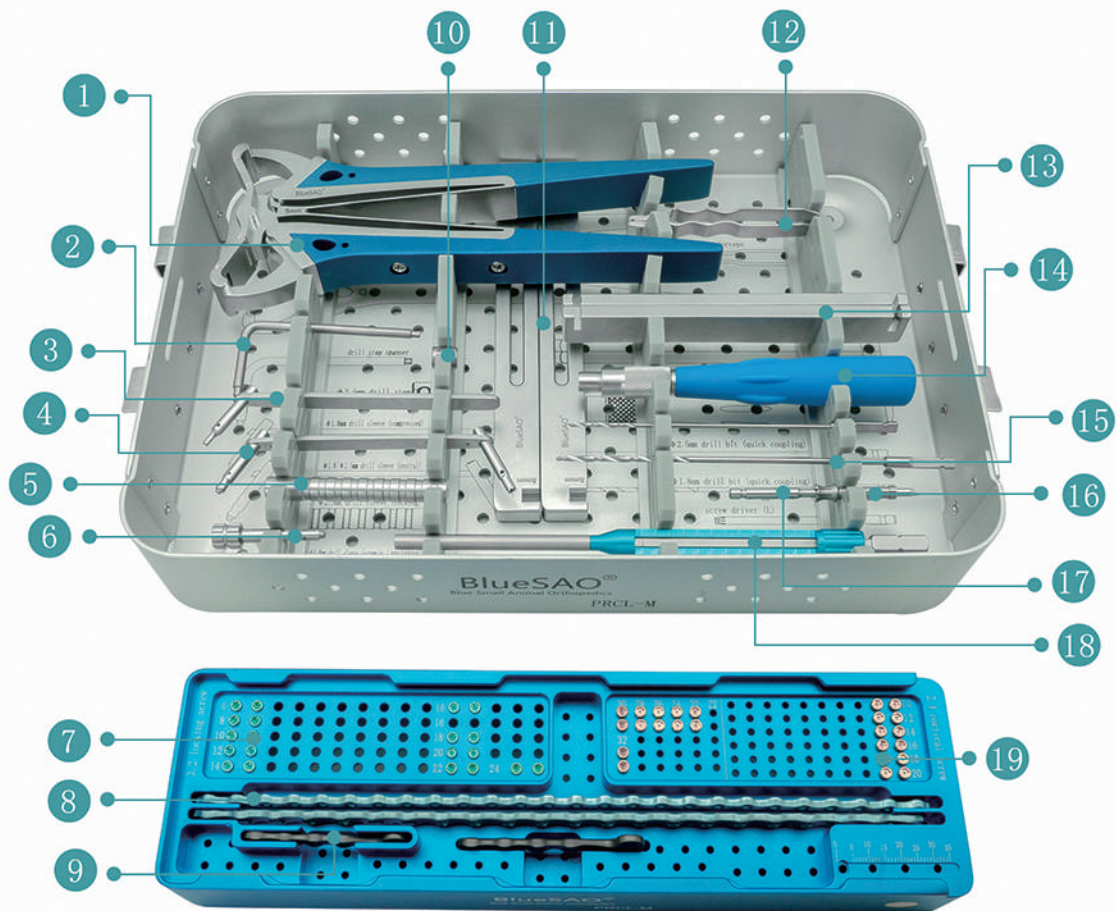
Product Code: 0202102002

Clinical case:

A poodle, 3kg, fell down from the building, which caused a oblique tibial fracture, fixed with PRCL-S locking plate.



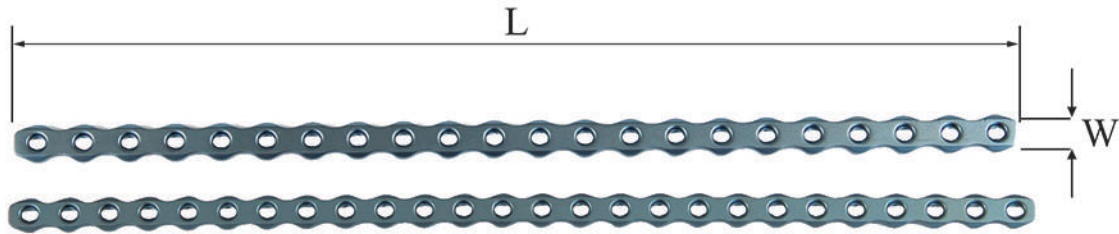
PRCL-M



- | | |
|--|--|
| 1: bending pliers for in-plane bending | 11: bending iron for in-plane (optional) |
| 2: drill stop spanner | 12: screw forceps |
| 3: drill sleeve (compressed) | 13: bending iron |
| 4: drill sleeve (neutral) | 14: screwdriver handle |
| 5: drill sleeve (locking) | 15: drill bit (quick coupling) |
| 6: drill sleeve (screw-in) | 16: screwdriver (quick coupling) |
| 7: locking screw | 17: screw holder |
| 8: bone plate | 18: depth gauge |
| 9: T bone plate | 19: cortical screw |
| 10: drill stop | |

PRCL-M

Implants



Bone plate material: titanium

Width	Length	Number of holes	Product Code
8mm	234mm	26holes	0100100280
9mm	231mm	22holes	0100100290

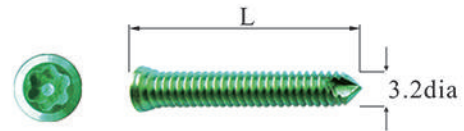
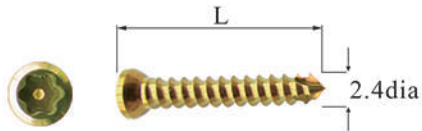


T Bone plate material: titanium

W1	W2	Length	Number of holes	Product Code
8mm	17mm	51mm	6holes	0100100580
9mm	19.5mm	59mm	6holes	0100100590

PRCL-M

Implants



2.4mm Cortical screw

material: titanium alloy

Length	Product Code
10mm	0100201210
12mm	0100201212
14mm	0100201214
16mm	0100201216
18mm	0100201218
20mm	0100201220
22mm	0100201222
24mm	0100201224
26mm	0100201226
28mm	0100201228
30mm	0100201230
32mm	0100201232

3.2mm Locking screw

material: titanium alloy

Length	Product Code
6mm	0100301206
8mm	0100301208
10mm	0100301210
12mm	0100301212
14mm	0100301214
16mm	0100301216
18mm	0100301218
20mm	0100301220

PRCL-M

Tools



drill sleeve(neutral)

size : Φ 1.8 / Φ 2.5

Product Code: 0200502002



drill sleeve(compressed)

size : Φ 1.8

Product Code: 0200602018



drill sleeve (screw-in)

size : Φ 1.8

Product Code: 0200702018



drill sleeve (locking)

size : Φ 2.5

Product Code: 0200402025



drill bit (quick coupling)

size : Φ 1.8, Φ 2.5

Product Code: 0200102018,0200102025



drill bit (general)

size : Φ 1.8, Φ 2.5

Product Code: 0200202018,0200202025



drill stop

size : Φ 2.5

Product Code: 0200302025

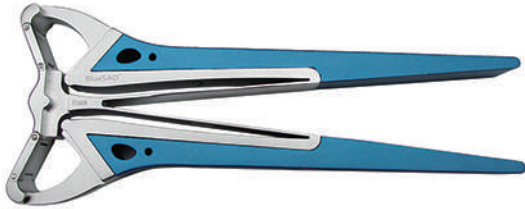


drill stop spanner

Product Code: 0200302101

PRCL-M

Tools



bending pliers for in-plane bending

size : 8mm/9mm

Product Code: 0200902004



bending iron for in-plane (optional)

size : 8mm/9mm

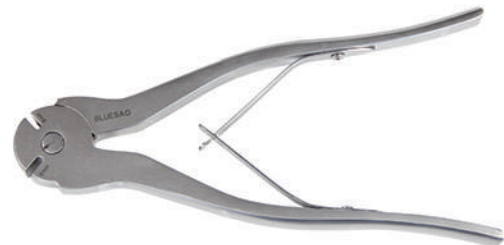
Product Code: 0200902012



bending iron

size : 8mm/9mm

Product Code: 0200802002



bone plate cutter

size : 8mm/9mm

Product Code: 0201002002



depth gauge

size : 60mm

Product Code: 0201302060



screw forceps

size : L

Product Code: 0201202002



screwdriver (quick coupling)

size : L

Product Code: 0201102003



screwdriver handle

Product Code: 0201102012

PRCL-M

Tools



screw holder

size : HC3. 2/2. 4

Product Code: 0207003224



multifunction bone plate cutter

size : 5/6. 5mm, 8/9mm

Product Code: 0201002004



multifunction bone plate cutter

size : 8/9mm, 10/11mm

Product Code: 0201002005



tray (holds implants)

size : M

Product Code: 0202002002



instrument container (holds instruments)

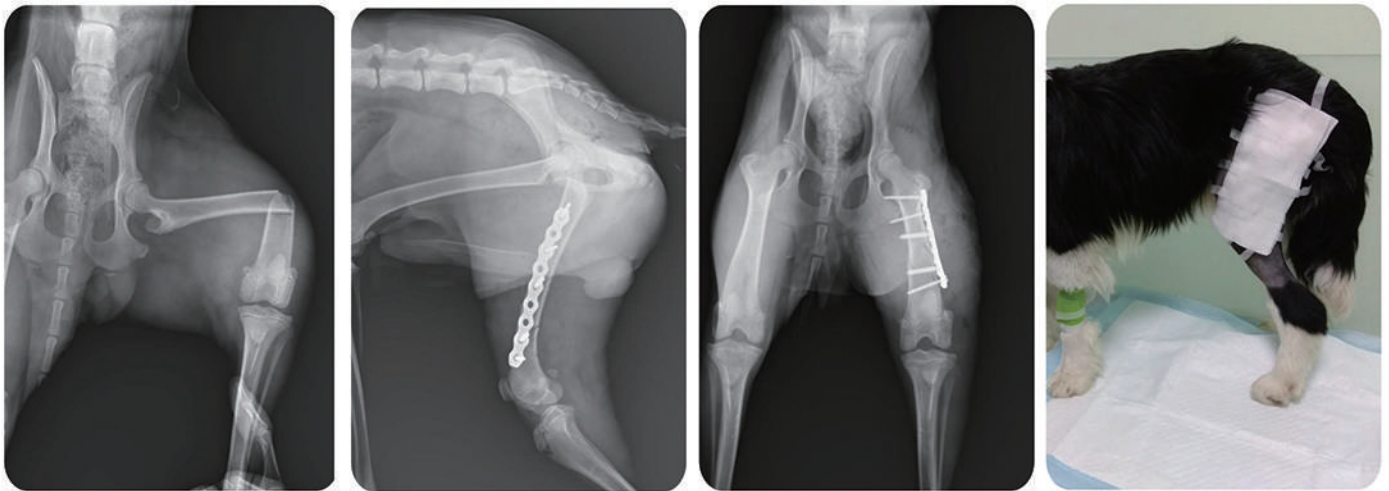
size : M

Product Code: 0202102003

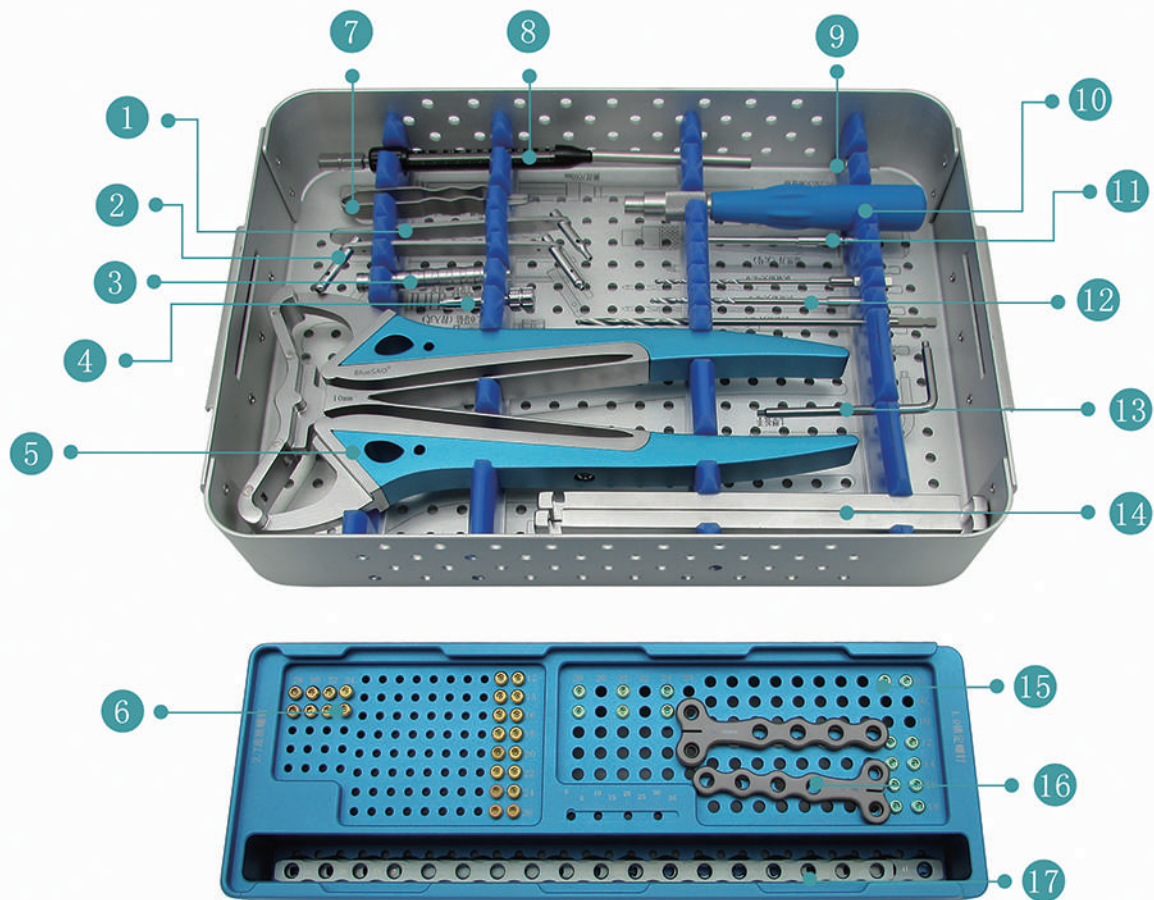
PRCL-M

Clinical case:

A Border collie, 10kg, suffered from a transverse fracture of femur, fixed with PR-CL-M 9mm locking plate.



PRCL-L



1: drill sleeve (compressed)

2: drill sleeve (neutral)

3: drill sleeve (locking)

4: drill sleeve (screw-in)

5: bending pliers for in-plane bending

6: cortical screw

7: screw forceps

8: depth gauge

9: drill stop

10: screwdriver handle

11: screwdriver (quick coupling)

12: drill bit (quick coupling)

13: drill stop spanner

14: bending iron

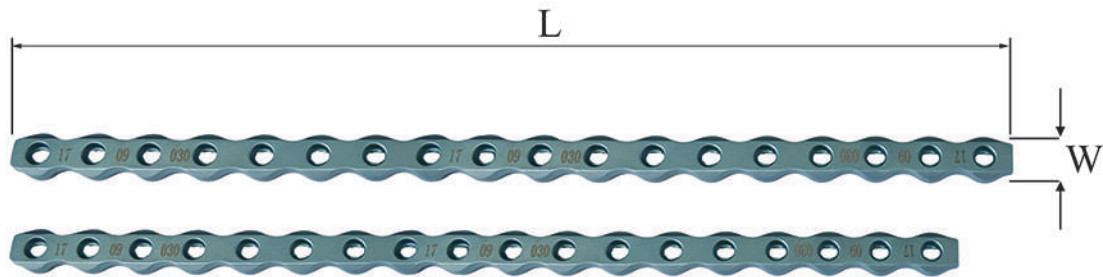
15: locking screw

16: T bone plate

17: bone plate

PRCL-L

Implants



Bone plate material: titanium

Width	Length	Number of holes	Product Code
10mm	216mm	18holes	0100100310
11mm	234mm	18holes	0100100311

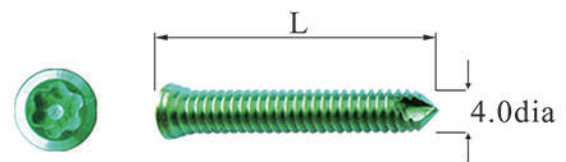
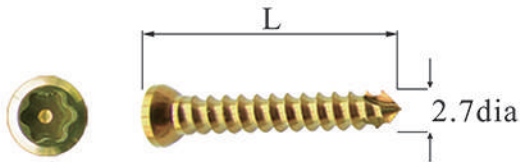


T Bone plate material: titanium

W1	W2	Length	Number of holes	Product Code
10mm	22mm	67mm	6holes	0100100510
11mm	24mm	73.5mm	6holes	0100100511

PRCL-L

Implants



2.7mm Cortical screw

material: titanium alloy

Length	Product Code
12mm	0100201312
14mm	0100201314
16mm	0100201316
18mm	0100201318
20mm	0100201320
22mm	0100201322
24mm	0100201324
26mm	0100201326
28mm	0100201328
30mm	0100201330
32mm	0100201332
34mm	0100201334

4.0mm Locking screw

material: titanium alloy

Length	Product Code
10mm	0100301310
12mm	0100301312
14mm	0100301314
16mm	0100301316
18mm	0100301318
20mm	0100301320
22mm	0100301322
24mm	0100301324

PRCL-L

Tools



drill sleeve(neutral)

size : $\Phi 2.0 / \Phi 2.7$

Product Code: 0200502003



drill sleeve(compressed)

size : $\Phi 2.0$

Product Code: 0200602020



drill sleeve (screw-in)

size : $\Phi 2.0$

Product Code: 0200702020



drill sleeve (locking)

size : $\Phi 3.2$

Product Code: 0200402032



drill bit (quick coupling)

size : $\Phi 2.0, \Phi 2.7, \Phi 3.2$

Product Code: 0200102020,0200102027,
0200102032



drill bit (general)

size : $\Phi 2.0, \Phi 2.7, \Phi 3.2$

Product Code: 0200202020,0200202027,
0200202032



drill stop

size : $\Phi 3.2$

Product Code: 0200302032



drill stop spanner

Product Code: 0200302101

PRCL-L

Tools



bending pliers for in-plane bending

size : 10mm/11mm

Product Code: 0200902005



bending iron

size : 10mm/11mm

Product Code: 0200802003



screwdriver (quick coupling)

size : L

Product Code: 0201102003



depth gauge

size : 60mm

Product Code: 0201302060



screw forceps

size : L

Product Code: 0201202002



screwdriver handle

Product Code: 0201102012



screw holder

size : HC4. 0/2. 7

Product Code: 0207004027



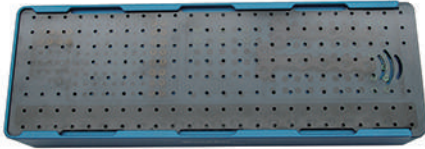
multifunction bone plate cutter

size : 8/9mm, 10/11mm

Product Code: 0201002005

PRCL-L

Tools



tray (holds implants)

size : L

Product Code: 0202002003



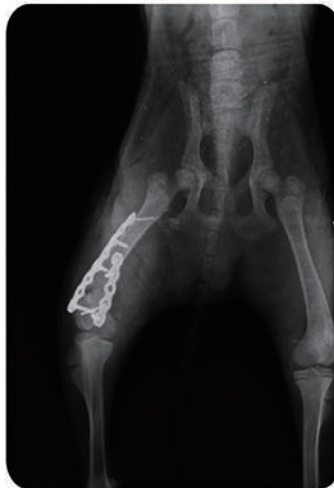
instrument container (holds instruments)

size : L

Product Code: 0202102004

Clinical case:

A labrador, 17kg, suffered from a femoral comminuted fracture, fixed with PRCL 10mm locking plate.



PRCL System

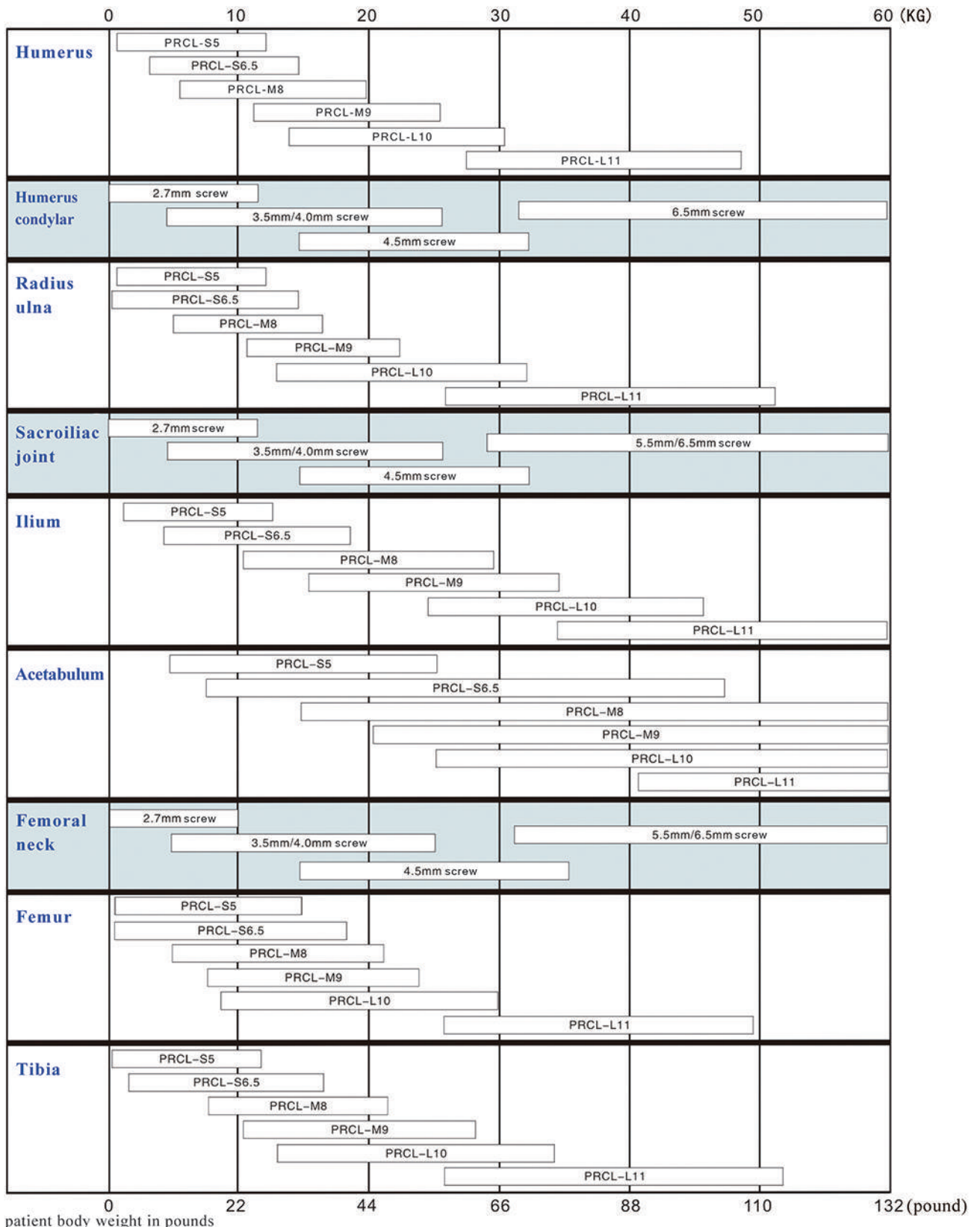
Bone plate, screw, drill bit reference table

bone plate	PRCL-Mini	PRCL-S	PRCL-M	PRCL-L
size	W: 3.5mm W: 4mm 20 holes 20 holes L: 79.5mm L: 89.5mm	W: 5mm W: 6.5mm 43 holes 34 holes L: 236.5mm L: 238mm	W: 8mm W: 9mm 26 holes 22 holes L: 234mm L: 231mm	W: 10mm W: 11mm 18 holes 18 holes L: 216mm L: 234mm
locking screw				
screw	φ 1.6mm	φ 2.4mm	φ 3.2mm	φ 4.0mm
drill bit	φ 1.1mm	φ 1.8mm	φ 2.5mm	φ 3.2mm
cortical screw				
screw	φ 1.0mm	φ 1.5mm	φ 2.4mm	φ 2.7mm
drill bit	φ 0.7mm	φ 1.1mm	φ 1.8mm	φ 2.0mm

PRCL System

Surgery bone plate selected reference table

patient body weight in kilograms



patient body weight in pounds

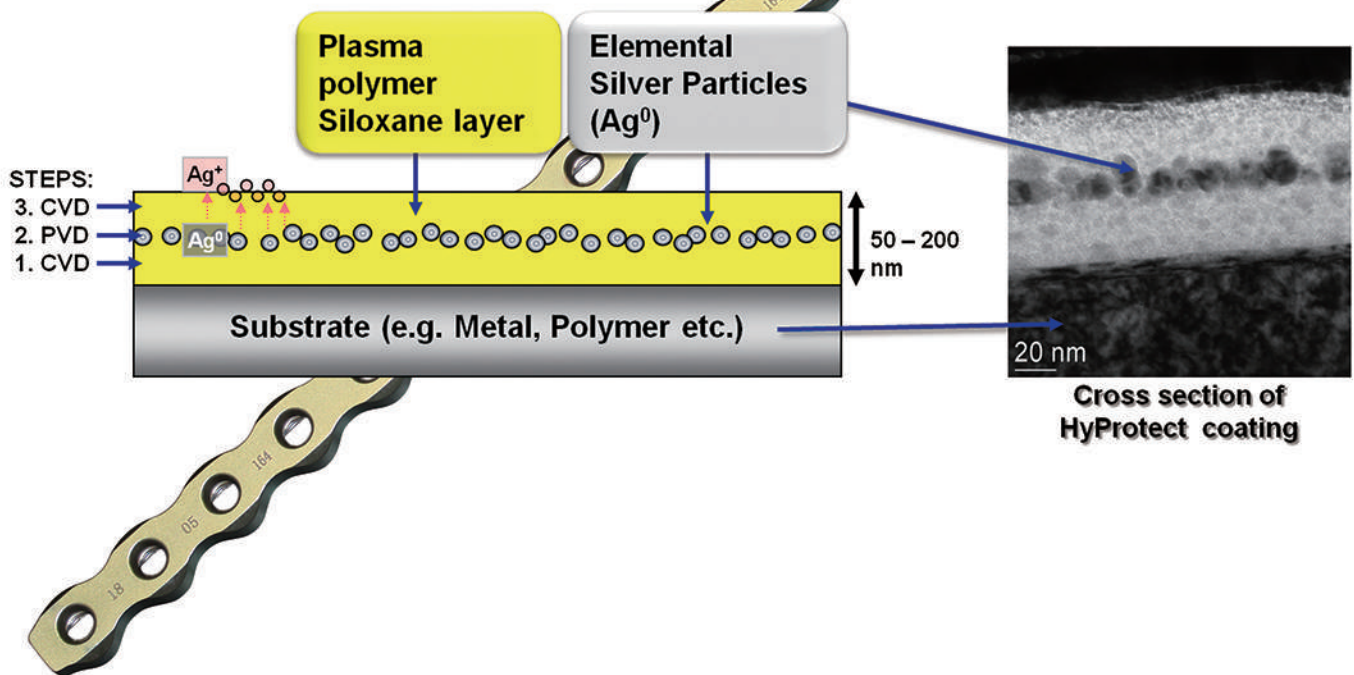
Note: If the animal is under 1.5 kilograms, please choose PRCL-Mini.

HyProtect – Antimicrobial Plasma Coating

PVD & CVD process for medical implants / devices

HyProtect = Antimicrobial + Improved osseointegration

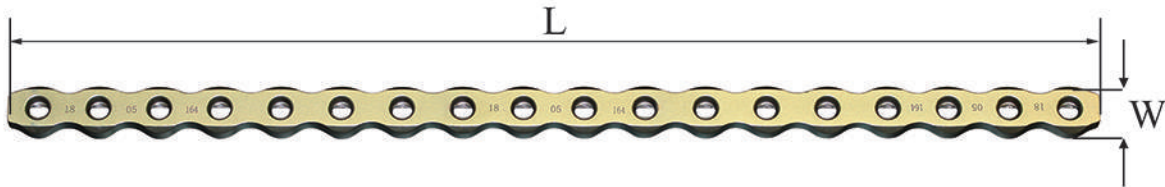
- A reservoir of pure elemental silver particles embedded in a biocompatible plasma polymer
- Controlled and long-term generation of silver ions that diffuse through the plasma polymer forming an antimicrobial surface to help reduce the risk of infections



Hyprotect-PRCL locking plate
 Antimicrobial Plasma Coating locking plate

Hyprotect-PRCL

Implants



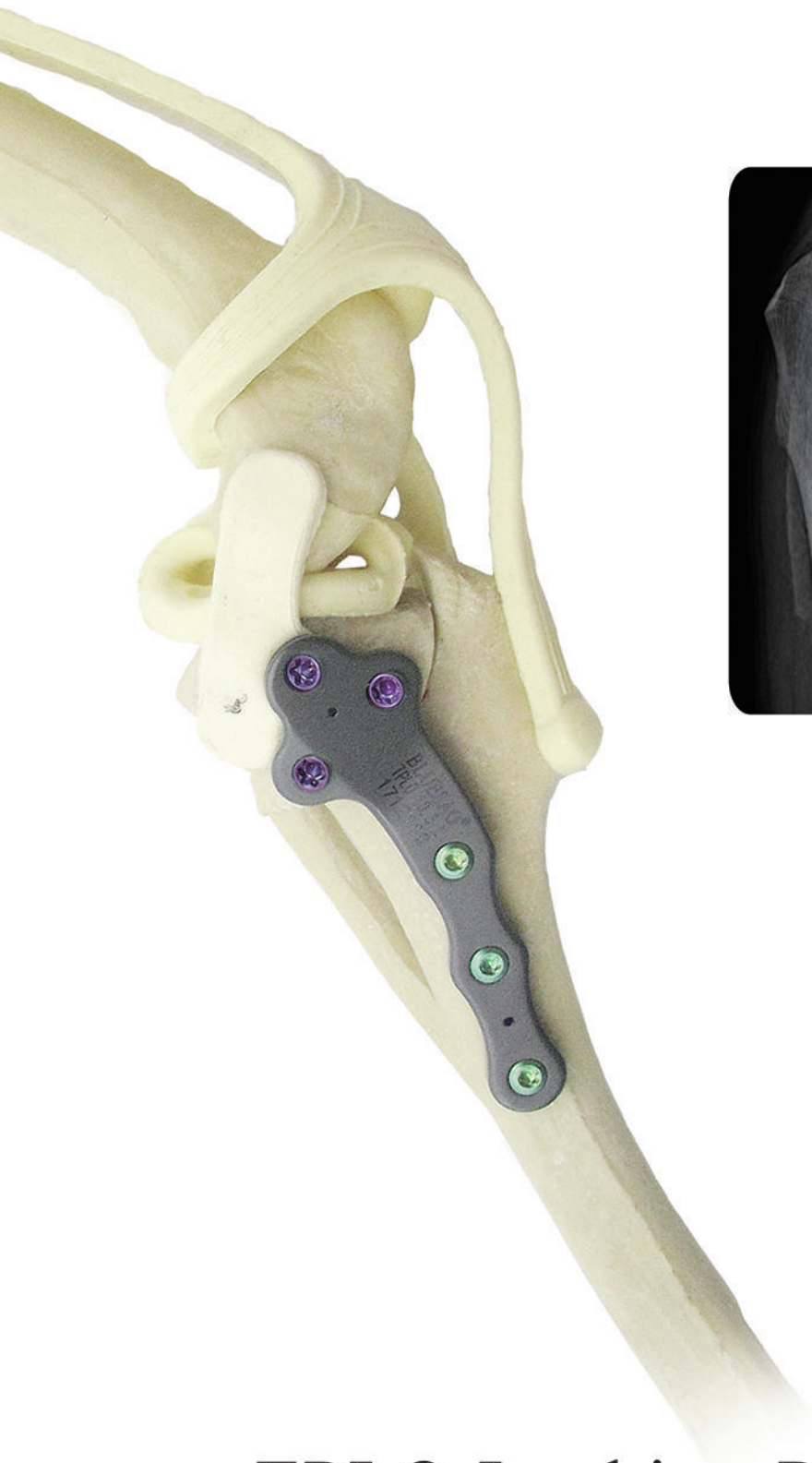
Bone plate material: titanium

Width	Length	Number of holes	Product Code
5mm	88mm	16holes	0100133150
6.5mm	112mm	16holes	0100133165
9mm	168mm	16holes	0100133290
11mm	234mm	18holes	0100133311

Clinical case:

German collie, suffered from a radius comminuted fracture caused by bitten. Since it is a highly infectious risk fracture, so fixed with HyProtect-PRCL locking plate in surgery.





TPLO Locking Plate System

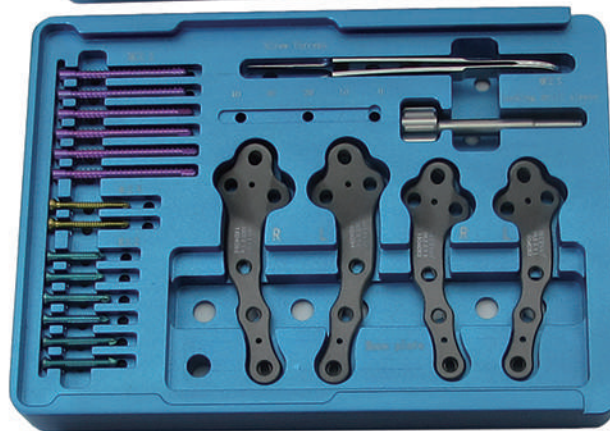
Tibial Plateau Leveling Osteotomy

TPLO Locking Plate System

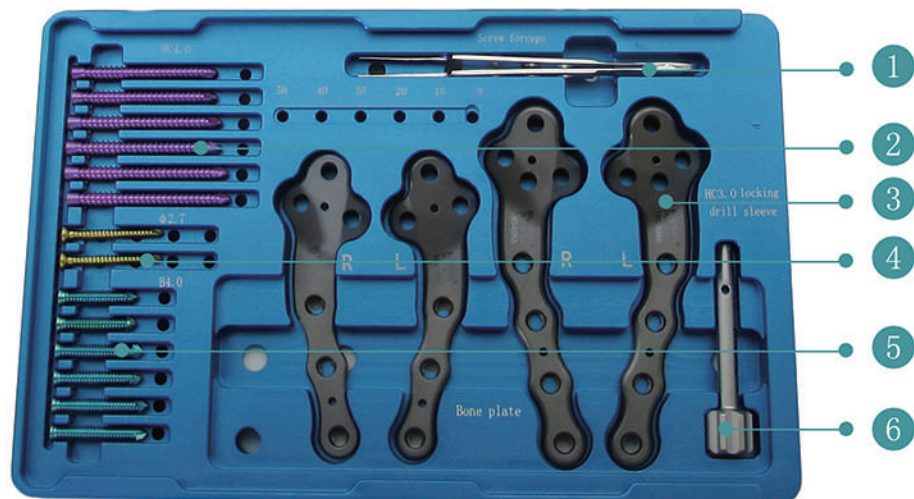
TPLO-S



TPLO-M



TPLO-L



- | | |
|---------------------|------------------------------|
| 1: screw forceps | 4: cortical screw |
| 2: HC locking screw | 5: locking screw |
| 3: TPLO bone plate | 6: HC drill sleeve (locking) |

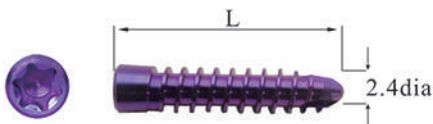
TPLO-S

Implants



Bone plate material: titanium

W1	W2	Length	Number of holes	Product Code(L)	Product Code(R)
5.5mm	11.5mm	38.7mm	6holes	1400101001	1400101002
6.5mm	13.7mm	45.7mm	6holes	1400101003	1400101004



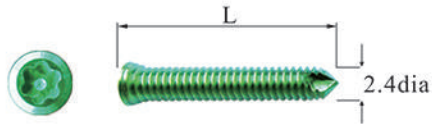
2.4mm HC locking screw

material: titanium alloy

Length	Product Code
16mm	0100301516
18mm	0100301518
20mm	0100301520
22mm	0100301522
24mm	0100301524
26mm	0100301526
28mm	0100301528
30mm	0100301530

TPLO-S

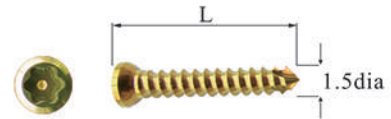
Implants



2.4mm Locking screw

material: titanium alloy

Length	Product Code
5mm	0100301105
6mm	0100301106
8mm	0100301108
10mm	0100301110
12mm	0100301112
14mm	0100301114
16mm	0100301116



1.5mm Cortical screw

material: titanium alloy

Length	Product Code
6mm	0100201106
7mm	0100201107
8mm	0100201108
10mm	0100201110
12mm	0100201112
14mm	0100201114
16mm	0100201116
18mm	0100201118
20mm	0100201120
22mm	0100201122
24mm	0100201124
26mm	0100201126
28mm	0100201128
30mm	0100201130

TPLO-S

TPLO Custom Tool



HC drill sleeve (locking)

size : Φ 1. 8

Product Code: 1400101218



TPLO Reduction forceps

Product Code: 1400101501

General Tools(same as PRCL)



drill bit (quick coupling)

size : Φ 1. 1, Φ 1. 8

Product Code: 0200102011,0200102018



drill sleeve (screw-in)

size : Φ 1. 1

Product Code: 0200702011



drill sleeve(compressed)

size : Φ 1. 1

Product Code: 0200602011



drill sleeve (locking)

size : Φ 1. 8

Product Code: 0200402018



depth gauge

size : 40mm

Product Code: 0201302041



screw forceps

size : Mini

Product Code: 0201202001



screwdriver (quick coupling)

size : S

Product Code: 0201102002



screwdriver handle

Product Code: 0201102012

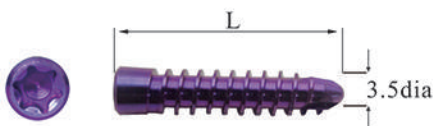
TPLO-M

Implants



Bone plate material: titanium

W1	W2	Length	Number of holes	Product Code(L)	Product Code(R)
8.5mm	17.5mm	59.8mm	6holes	1400101005	1400101006
9.5mm	20mm	66.8mm	6holes	1400101007	1400101008

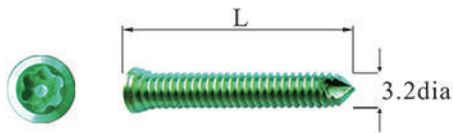


3.5mm HC locking screw
material: titanium alloy

Length	Product Code
24mm	0100301624
26mm	0100301626
28mm	0100301628
30mm	0100301630
32mm	0100301632
34mm	0100301634
36mm	0100301636
38mm	0100301638
40mm	0100301640

TPLO-M

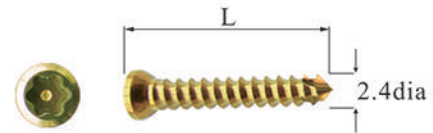
Implants



3.2mm Locking screw

material: titanium alloy

Length	Product Code
6mm	0100301206
8mm	0100301208
10mm	0100301210
12mm	0100301212
14mm	0100301214
16mm	0100301216
18mm	0100301218
20mm	0100301220



2.4mm Cortical screw

material: titanium alloy

Length	Product Code
10mm	0100201210
12mm	0100201212
14mm	0100201214
16mm	0100201216
18mm	0100201218
20mm	0100201220
22mm	0100201222
24mm	0100201224
26mm	0100201226
28mm	0100201228
30mm	0100201230
32mm	0100201232

TPLO-M

TPLO Custom Tool



HC drill sleeve (locking)

size : Φ 2.5

Product Code: 1400101225



TPLO Reduction forceps

Product Code: 1400101501

General Tools(same as PRCL)



drill bit (quick coupling)

size : Φ 1.8, Φ 2.5

Product Code: 0200102018,0200102025



drill sleeve (screw-in)

size : Φ 1.8

Product Code: 0200702018



drill sleeve(compressed)

size : Φ 1.8

Product Code: 0200602018



drill sleeve (locking)

size : Φ 2.5

Product Code: 0200402025



depth gauge

size : 60mm

Product Code: 0201302060



screw forceps

size : Mini

Product Code: 0201202001



screwdriver (quick coupling)

size : L

Product Code: 0201102003



screwdriver handle

Product Code: 0201102012

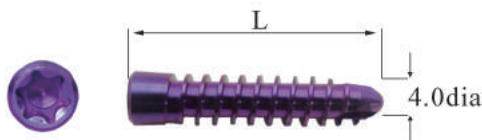
TPLO-L

Implants



Bone plate material: titanium

W1	W2	Length	Number of holes	Product Code(L)	Product Code(R)
10.5mm	22.1mm	73.8mm	6holes	1400101009	1400101010
11.5mm	26mm	89mm	8holes	1400101011	1400101012



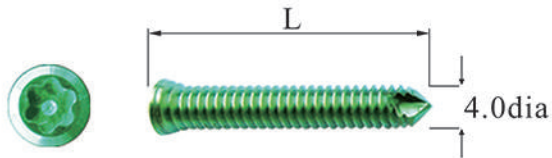
4.0mm HC locking screw

material: titanium alloy

Length	Product Code
30mm	0100301430
32mm	0100301432
34mm	0100301434
36mm	0100301436
38mm	0100301438
40mm	0100301440
42mm	0100301442

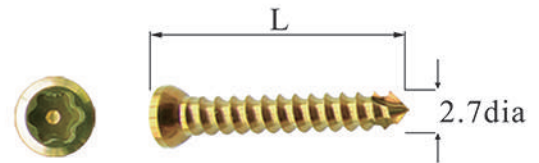
TPLO-L

Implants



4.0mm Locking screw
material: titanium alloy

Length	Product Code
10mm	0100301310
12mm	0100301312
14mm	0100301314
16mm	0100301316
18mm	0100301318
20mm	0100301320
22mm	0100301322
24mm	0100301324



2.7mm Cortical screw
material: titanium alloy

Length	Product Code
12mm	0100201312
14mm	0100201314
16mm	0100201316
18mm	0100201318
20mm	0100201320
22mm	0100201322
24mm	0100201324
26mm	0100201326
28mm	0100201328
30mm	0100201330
32mm	0100201332
34mm	0100201334

TPLO-L

TPLO Custom Tool



HC drill sleeve (locking)

size : Φ 3. 0

Product Code: 1400101230



TPLO Reduction forceps

Product Code: 1400101501

General Tools(same as PRCL)



drill bit (quick coupling)

size : Φ 2. 0, Φ 3. 0, Φ 3. 2

Product Code: 0200102020,0200102030,
0200102032



drill sleeve (screw-in)

size : Φ 2. 0

Product Code: 0200702020



drill sleeve(compressed)

size : Φ 2. 0

Product Code: 0200602020



drill sleeve (locking)

size : Φ 3. 2

Product Code: 0200402032



depth gauge

size : 60mm

Product Code: 0201302060



screw forceps

size : Mini

Product Code: 0201202001



screwdriver (quick coupling)

size : L

Product Code: 0201102003



screwdriver handle

Product Code: 0201102012

TPLO

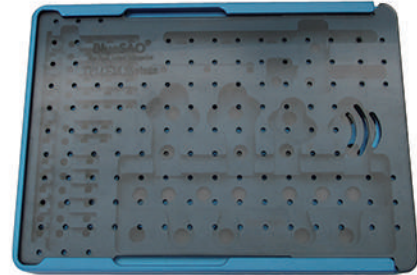
TPLO Custom Tool



implant tray

size : S

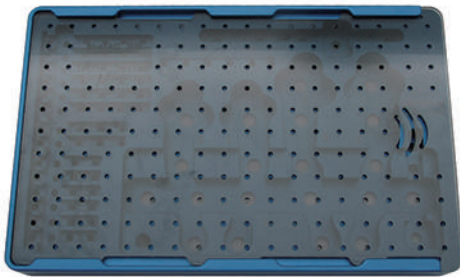
Product Code: 1400101401



implant tray

size : M

Product Code: 1400101402



implant tray

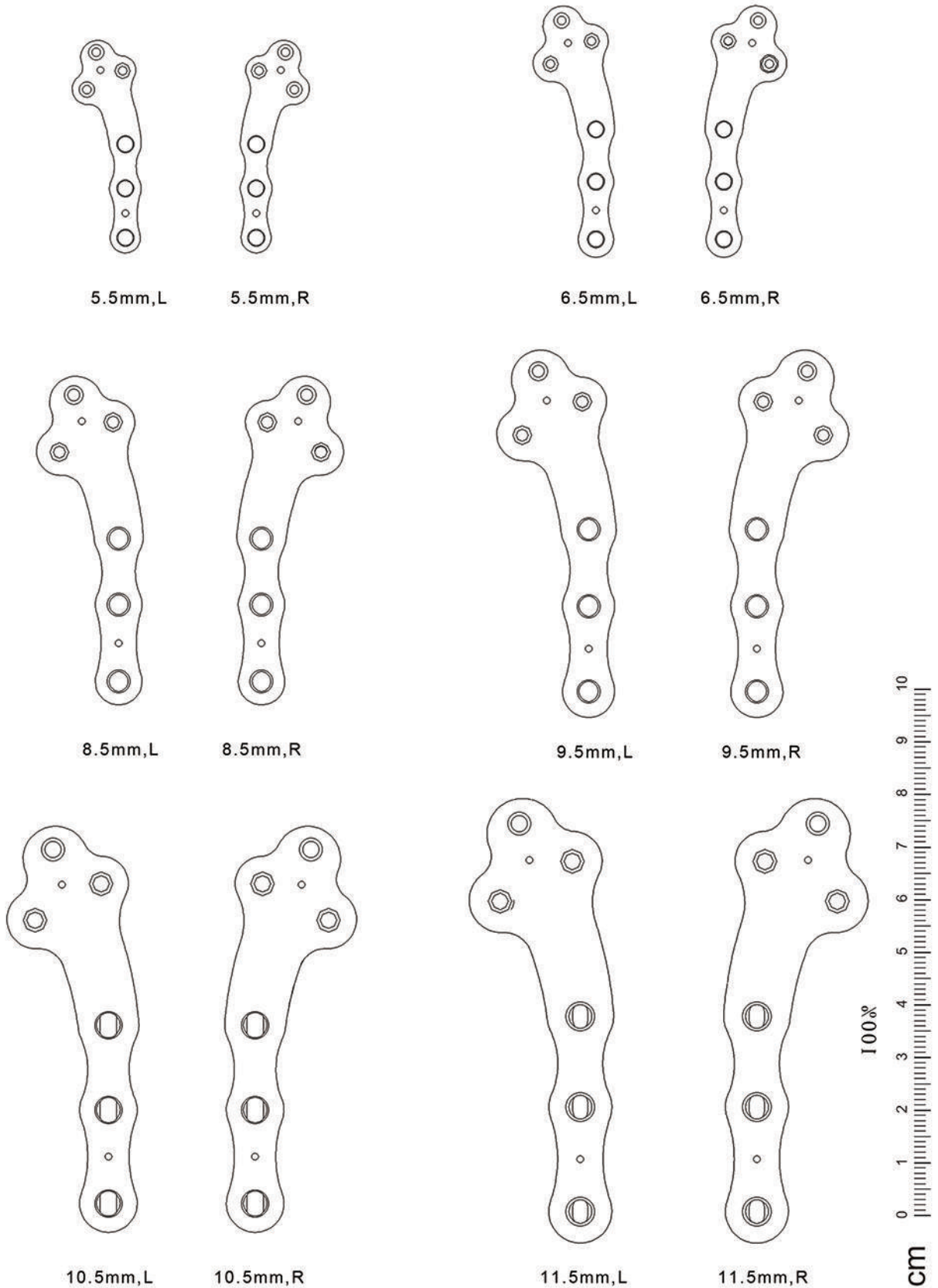
size : L

Product Code: 1400101403

TPLO System

BLUESAO® TPLO

Vet X-ray Template(5% Magnification)



TPLO System

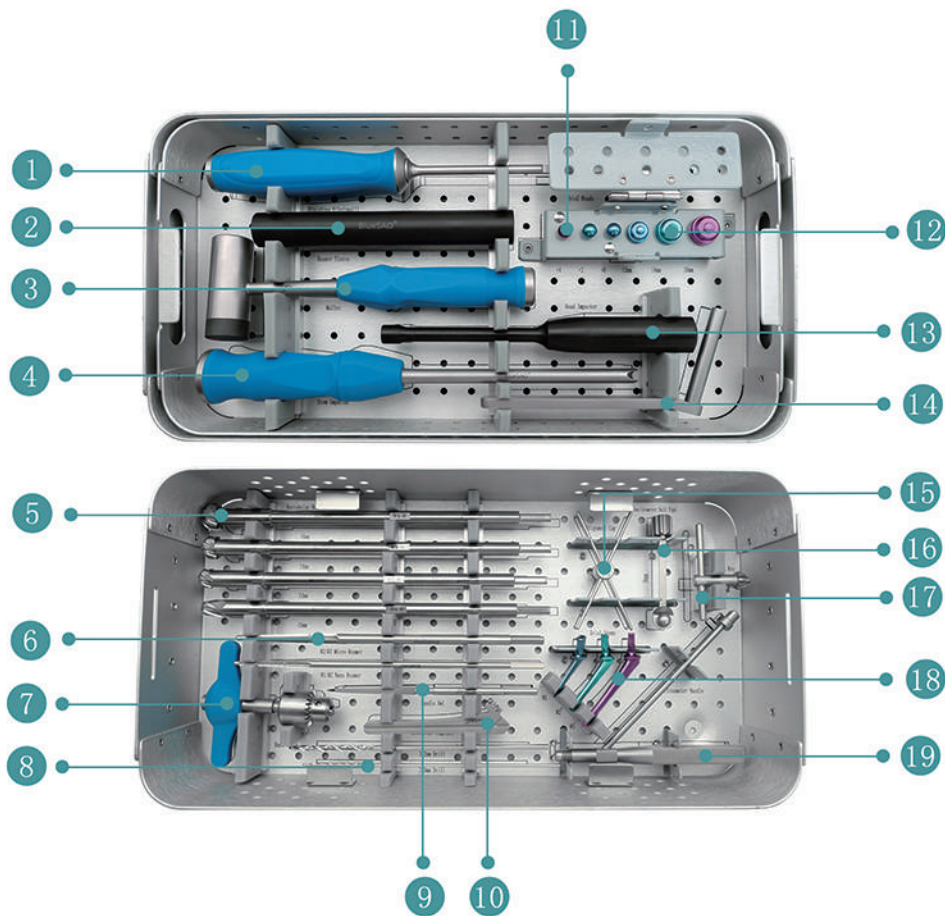
Clinical case:





Micro&Nano Total Hip Replacement System

Micro&Nano Total Hip Replacement System



- | | |
|-----------------------------|-------------------------|
| 1: Finishing File | 11: Trial Head |
| 2: Acetabular Reamer Sleeve | 12: Trial Cup |
| 3: Mallet | 13: Head Impactor |
| 4: Stem Impactor | 14: Tissue Guard |
| 5: Acetabular Reamer | 15: Alignment Cap |
| 6: Tapered Femoral Reamer | 16: Inclinator Ball Tip |
| 7: Hand Drill | 17: Chuck Key |
| 8: Drill Bit | 18: Trial Stem |
| 9: Handle Awl | 19: Inclinator Handle |
| 10: Neck Resection Template | |

Micro&Nano Total Hip Replacement System Implants



Cup

material: GUR1020

Size	Product Code
φ 12	1628001929
φ 14	1628001928
φ 16	1628001927



Head

material: stainless steel,ADLC coating

Size	Product Code
φ 8 (+0)	1628001925
φ 8 (+2)	1628001926
φ 8 (+4)	1628001939



Stem

material: stainless steel

Size	Product Code
#1	1628001935
#2	1628001923
#3	1628001924

Micro&Nano Total Hip Replacement System Tools



Finishing File

Product Code: 1610001907



Acetabular Reamer Sleeve

Product Code: 1610001914



Mallet

Product Code: 1610001960



Stem Impactor

Product Code: 1610001909



Acetabular Reamer

size: ϕ 10, ϕ 12, ϕ 14, ϕ 16

Product Code: 1610001910, 1610001911,
1610001912, 1610001913



Tapered Femoral Reamer

size: #1/#2, #2/#3

Product Code: 1610001905, 1610001906



Hand Drill

Product Code: 0800202022



Drill Bit

size: ϕ 2, ϕ 3.2

Product Code: 1610001904, 1610001903

Micro&Nano Total Hip Replacement System

Tools



Handle Awl

Product Code: 1610001961



Neck Resection Template

Product Code: 1610001901



Trial Head

size: $\phi 8(+0)$, $\phi 8(+2)$, $\phi 8(+4)$

Product Code: 1610001957, 1610001956,
1610001955



Trial Cup

size: $\phi 12$, $\phi 14$, $\phi 16$

Product Code: 1610001941, 1610001942
1610001943



Head Impactor

Product Code: 1610001908



Tissue Guard

Product Code: 1610001902



Alignment Cap

Product Code: 1610001915



Inclinometer Ball Tip

size: 8mm

Product Code: 1610001917

Micro&Nano Total Hip Replacement System Tools



Chuck Key

Product Code: 1610001966



Trial Stem

size: #1, #2, #3

Product Code: 11610001952, 1610001953
1610001954



Inclinometer Handle

Product Code: 1610001916



Bone Cement Gun

Product Code: 1610001959



Container

Product Code: 1610001958

THR General Instruments

Tools



Gelpi Retractor(L)

Product Code: 0301202002



Bone finger skid

Product Code: 0300702004



Round Rasper

Product Code: 0400402001



Osteotome

size: 4mm

Product Code: 0400102004



Hatt Spoon(S)

Product Code: 1300101004



Bone Curette

Product Code: 1650000005



Rongeur (single joint)

Product Code: 0300302001



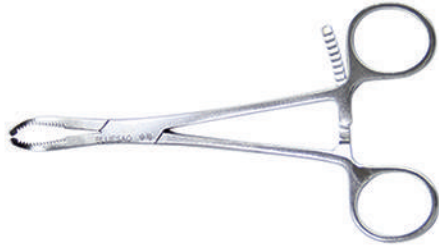
Drag Hook

size : 190mm,S:D=20mm:L:D=30mm

Product Code: 0300602001,0300602002

THR General Instruments

Tools



Bone Holding Forceps(M)

Product Code: 0300102002



Hoffman Retractor(S)

Product Code: 1300101001



Femoral Head Separator Forceps

Product Code: 1650000002



Femoral Stem Installation and Removal Set

Product Code: 1650000001



Periosteal Dissector

size : 170mm, cutting edge 3mm

Product Code: 0300502002



Controllable Suction

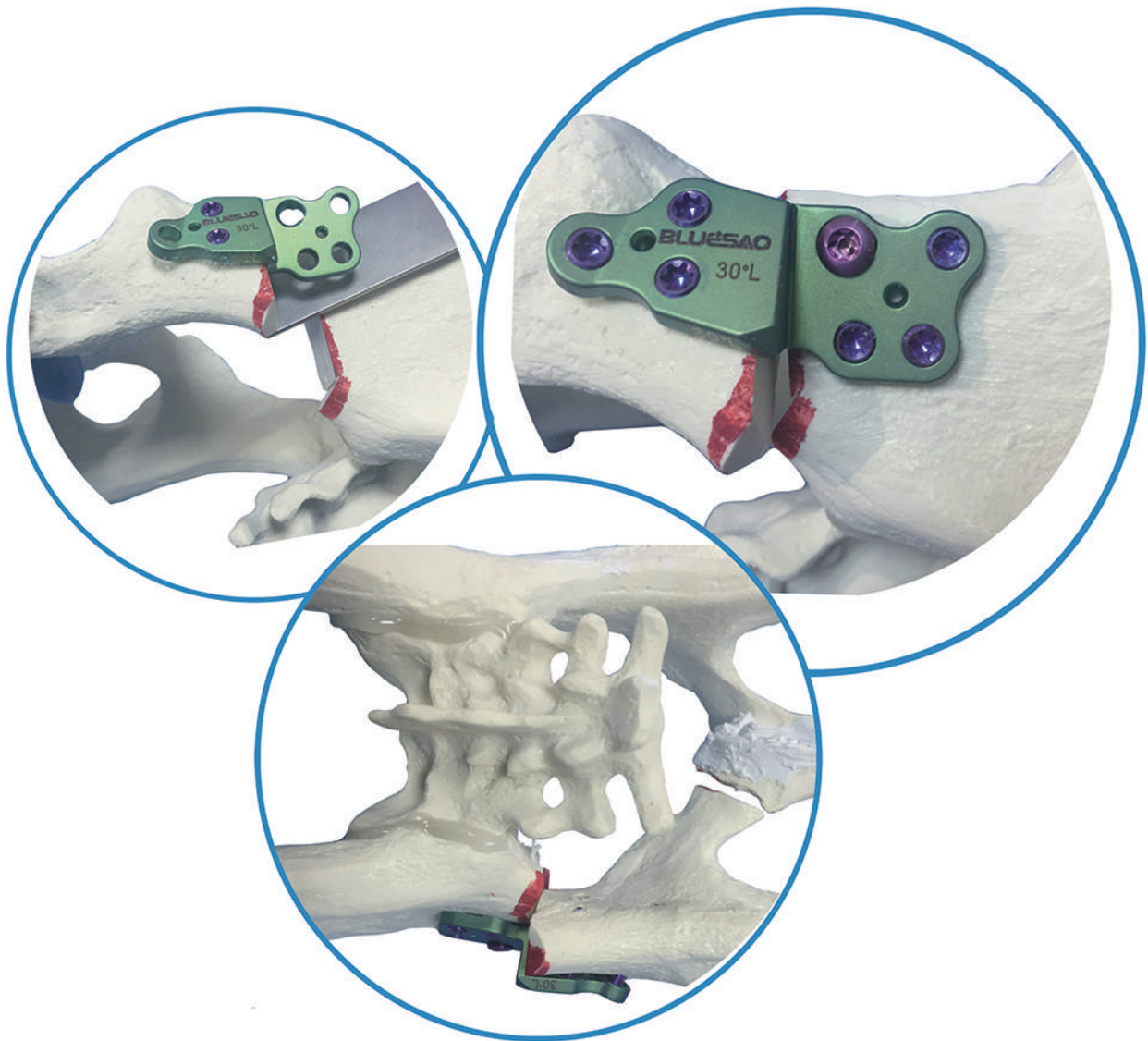
size : 3mm, 4mm

Product Code: 1650000003,1650000004



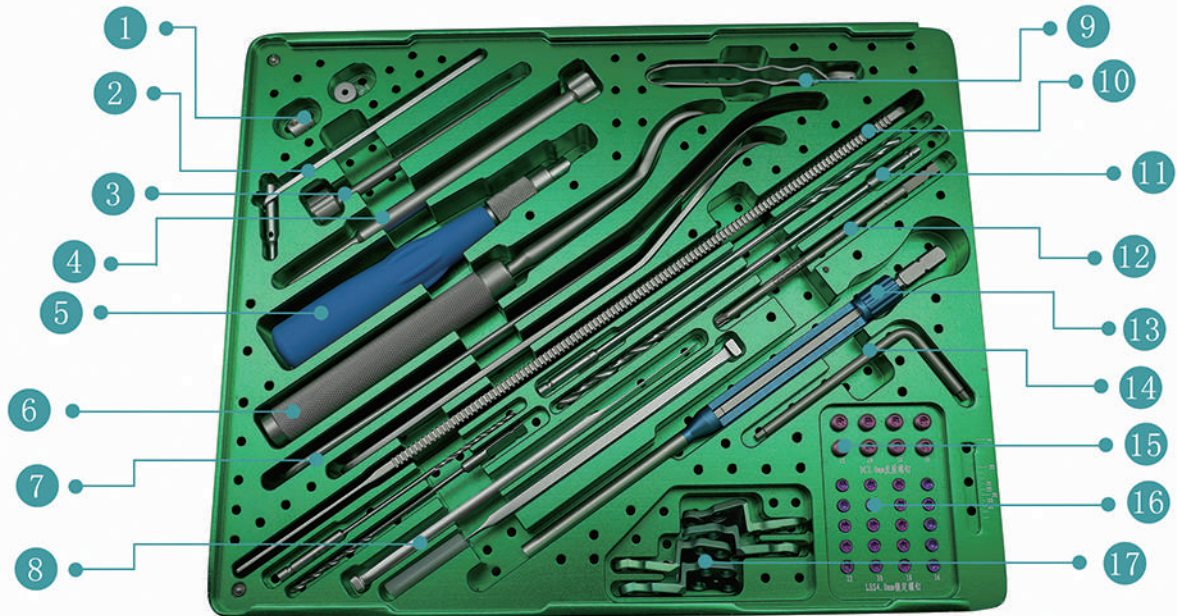
Container

Product Code: 1610001958



DPO Bone Plate System Double Pelvic Osteotomy

DPO System



- | | |
|--------------------------------|------------------------------------|
| 1: drill stop | 10: DPO skid |
| 2: drill sleeve (compressed) | 11: drill bit (quick coupling) |
| 3: HC drill sleeve (locking) | 12: screwdriver (quick coupling) |
| 4: PIN | 13: depth gauge |
| 5: screwdriver handle | 14: drill stop spanner |
| 6: pubis dissector | 15: cortical screw |
| 7: bone skid | 16: locking screw |
| 8: osteotome | 17: DPO bone plate |
| 9: screw forceps | |

DPO System

Implants



DPO plate 25° (left & right)

size: 25°

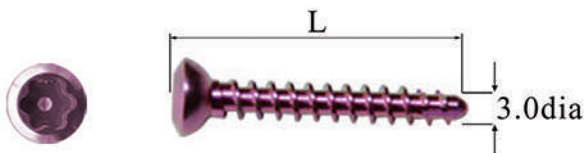
Product Code: 0100100401,0100100402



DPO plate 30° (left & right)

size: 30°

Product Code: 0100100403,0100100404



3.0mm Cortical screw

material: titanium alloy

Length	Product Code
16mm	0100201416
18mm	0100201418
20mm	0100201420
22mm	0100201422



4.0mm HC locking screw

material: titanium alloy

Length	Product Code
16mm	0100301416
18mm	0100301418
20mm	0100301420
22mm	0100301422

DPO System

Tools



drill sleeve(compressed)

size : $\Phi 2.0$

Product Code: 0200602020



HC drill sleeve (locking)

size : $\Phi 3.0$

Product Code: 0200402130



drill bit (quick coupling)

size : $\Phi 2.0, \Phi 3.0$

Product Code: 0200102020,0200102031



PIN

size : $\Phi 4.0$

Product Code: 0205002005



drill stop

size : $\Phi 2.0, \Phi 3.0$

Product Code: 0200302220,0200302221



drill stop spanner

Product Code: 0200302101



bone skid

size : L : 245mm, S : 205mm

Product Code: 0205002002,0205002001



osteotome

size : 6mm, 8mm

Product Code: 0400102006,0400102008

DPO System

Tools



pubis dissector
size : 200mm
Product Code: 0205002004



DPO skid
size : 300mm×20mm
Product Code: 0205002003



depth gauge
size : 60mm
Product Code: 0201302060



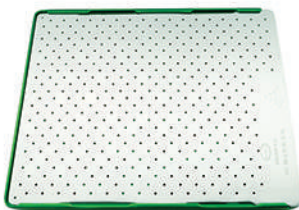
screw forceps
Product Code: 0201202002



screwdriver (quick coupling)
size : RU15
Product Code: 0201102004



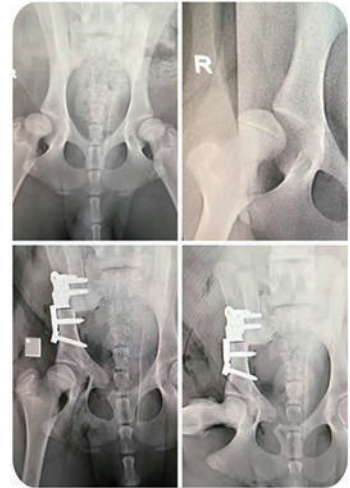
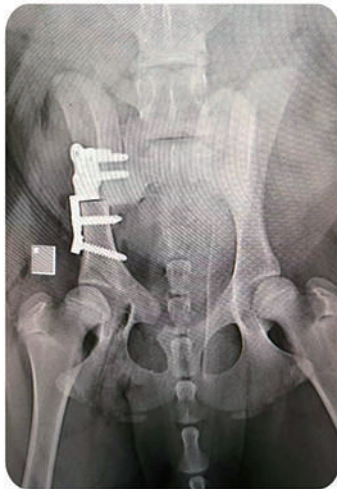
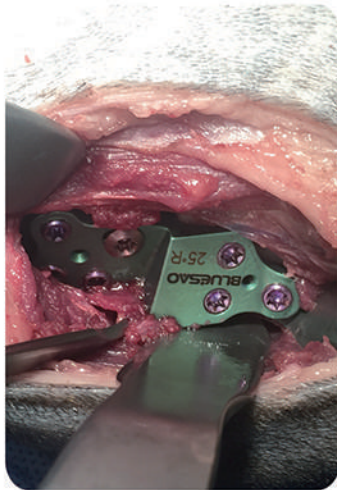
screwdriver handle
Product Code: 0201102012

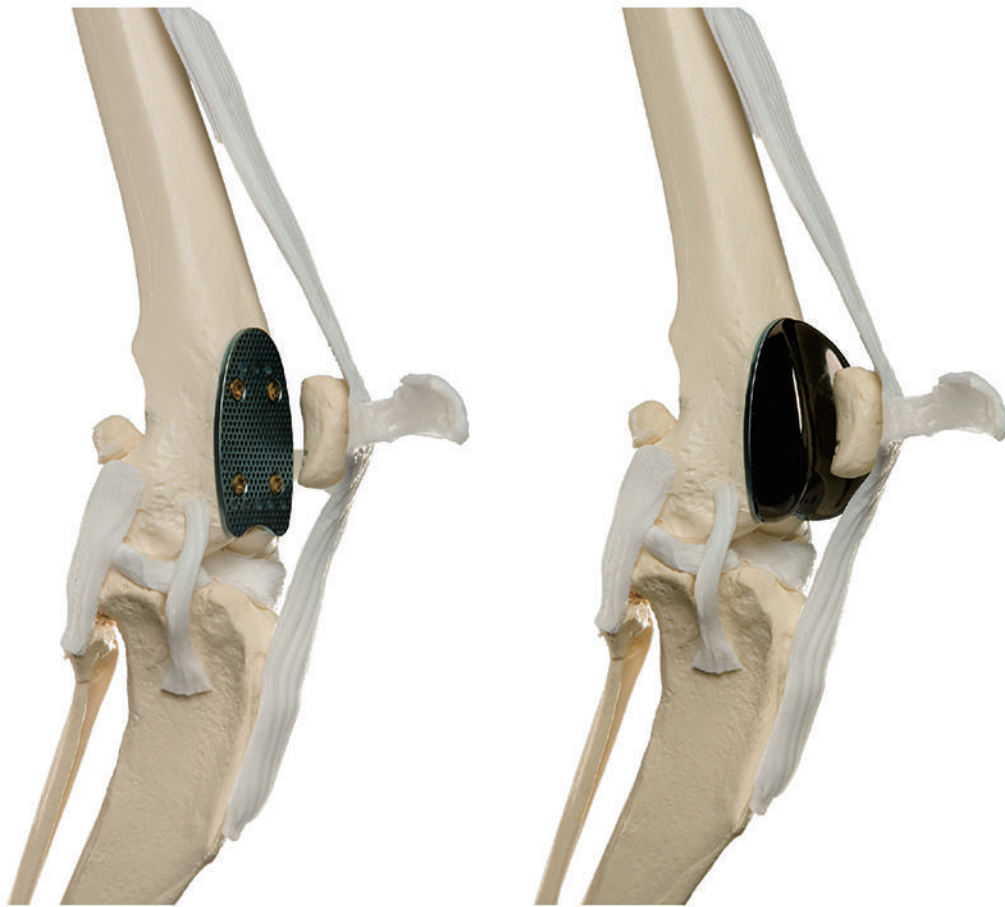


instrument tray
310mm*185mm*35mm
Product Code: 202102011

DPO System

Clinical case:





Patellar Groove Replacement System

Patella Groove Replacement system



1: trial prosthesis

2: cortical screw

3: screw forceps

4: screwdriver handle

5: groove & plate

6: drill bit (quick coupling)

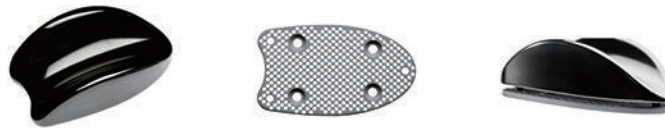
7: drill sleeve (neutral)

8: screwdriver (quick coupling)

9: depth gauge

PGR System

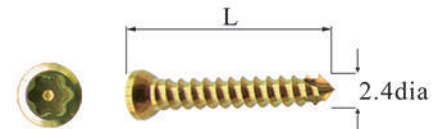
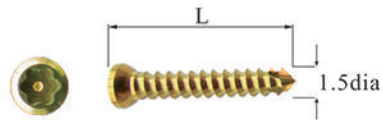
Implants



Groove & Plate	Product Code
size1	0101000001
size2	0101000002
size3	0101000003
size4	0101000004
size5	0101000005
size6	0101000006
size7	0101000007
size8	0101000008
size9	0101000009
size10	0101000010

PGR System

Implants



1.5mm Cortical screw

material: titanium alloy

Length	Product Code
6mm	0100201106
7mm	0100201107
8mm	0100201108
10mm	0100201110
12mm	0100201112
14mm	0100201114
16mm	0100201116
18mm	0100201118
20mm	0100201120
22mm	0100201122

2.4mm Cortical screw

material: titanium alloy

Length	Product Code
10mm	0100201210
12mm	0100201212
14mm	0100201214
16mm	0100201216
18mm	0100201218
20mm	0100201220
22mm	0100201222
24mm	0100201224
26mm	0100201226
28mm	0100201228
30mm	0100201230
32mm	0100201232

PGR System

Tools



Trial prosthesis	Product Code
size1	0204003001
size2	0204003002
size3	0204003003
size4	0204003004
size5	0204003005
size6	0204003006
size7	0204003007
size8	0204003008
size9	0204003009
size10	0204003010

PGR System

Tools



drill bit (quick coupling)

size : Φ 1. 1, Φ 1. 8

Product Code: 0200102011,0200102018



drill bit (general)

size : Φ 1. 1, Φ 1. 8

Product Code: 0200202011,0200202018



drill sleeve(neutral)

size : Φ 1. 1/ Φ 1. 8

Product Code: 0200502010



depth gauge

size : 40mm

Product Code: 0201302041



screwdriver (quick coupling)

size : S

Product Code: 0201102002



screwdriver (quick coupling)

size : L

Product Code: 0201102003



screwdriver handle

Product Code: 0201102012



screw forceps

size : Mini

Product Code: 0201202001



screw holder

size : HC2. 4/1. 5

Product Code: 0207002415



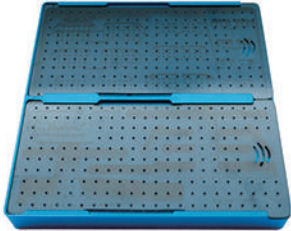
screw holder

size : HC3. 2/2. 4

Product Code: 0207003224

PGR System

Tools



container

Product Code: 0202102010

PGR System

BLUESAO Veterinary Surgical Products
Patella-Groove

Size 1

Size 2

Size 3

Size 4

Size 5

Size 6

Size 7

Size 8

Size 9

Size 10

Includes 5% magnification

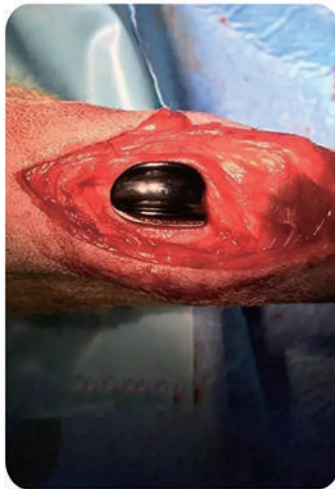
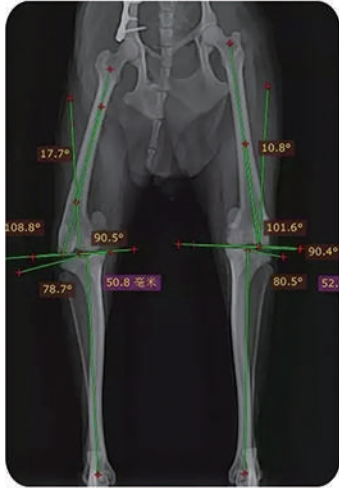
cm

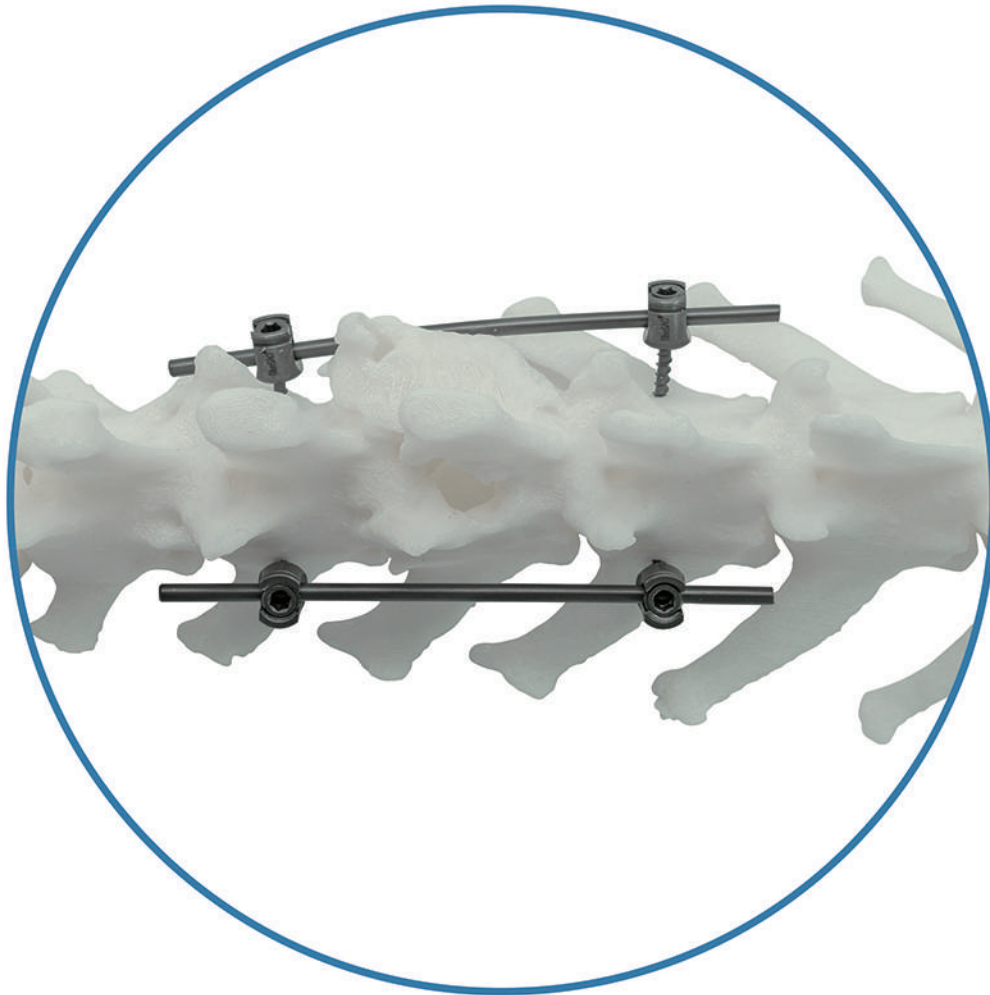
0 1 2 3 4 5 6 7 8 9 10

24.07.2010

PGR System

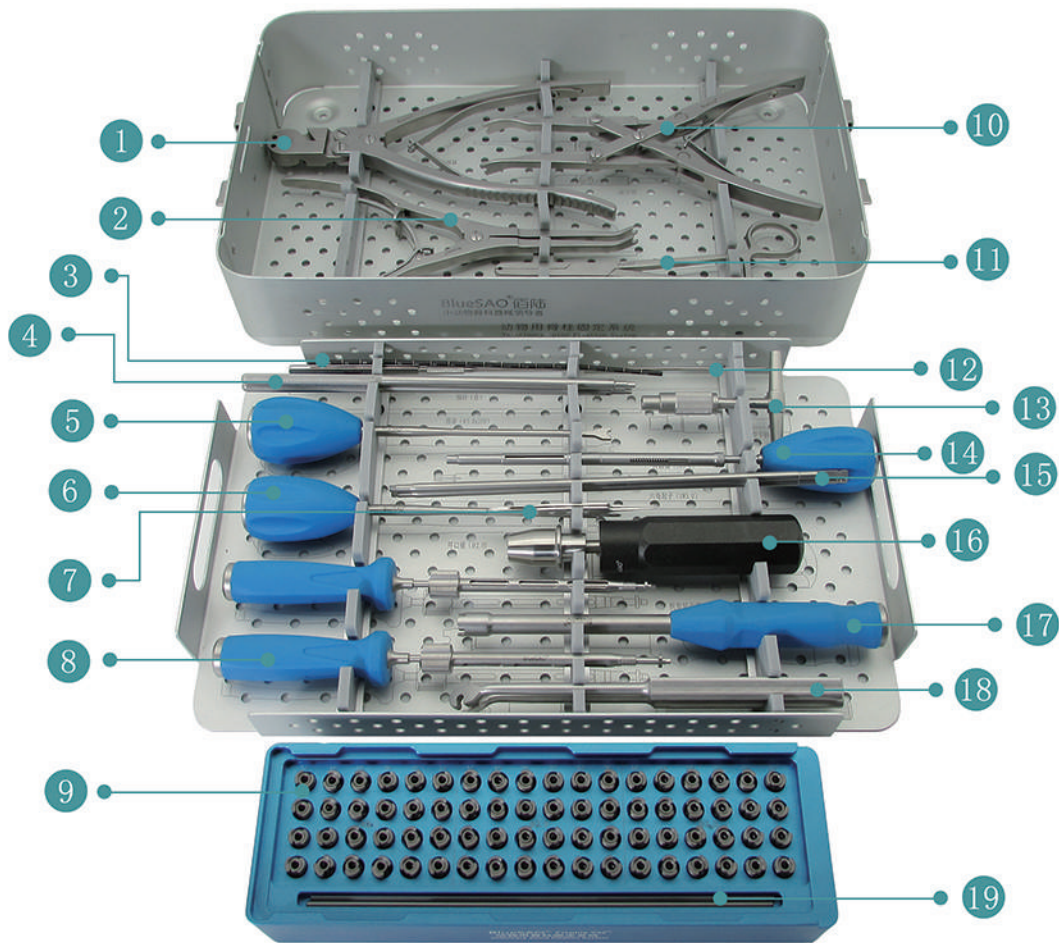
Clinical case:





Veterinary Spine Fixation System

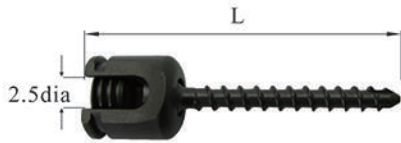
Veterinary Spine Fixation System



- | | |
|---------------------------------------|---|
| 1: rod cutter | 11: rod holder |
| 2: extension forceps | 12: depth probe |
| 3: template rod | 13: T-handle with AO adaptor |
| 4: capscrew holder | 14: limit open cone |
| 5: rod pusher | 15: screw driver tip Hex SW3.0 AO adaptor |
| 6: open cone | 16: torque handle 3.5NM |
| 7: screw forceps (Mini) | 17: anti-rotation sheath |
| 8: screw driver for spine screw SW2.5 | 18: rod bender(Left&Right) |
| 9: screw | 19: rod |
| 10: compression forceps | |

Veterinary Spine Fixation System

Implants



2.5mm screw

material: titanium

Length	Product Code
14mm	1500102514
16mm	1500102516
18mm	1500102518
20mm	1500102520
22mm	1500102522
24mm	1500102524



3.0mm screw

material: titanium

Length	Product Code
16mm	1500103016
18mm	1500103018
20mm	1500103020
22mm	1500103022
24mm	1500103024
26mm	1500103026



3.5mm screw

material: titanium

Length	Product Code
16mm	1500103516
18mm	1500103518
20mm	1500103520
22mm	1500103522
24mm	1500103524
26mm	1500103526



rod material: titanium

dia	Length	Product Code
2.5mm	20cm	1500104001

Veterinary Spine Fixation System

Tools



depth probe

Product Code: 1500200016



screw driver tip Hex SW3.0
AO adaptor

Product Code: 1500200001



template rod

Product Code: 1500200008



capscrew holder

Product Code: 1500200002



rod bender

size: Left, Right

Product Code: 1500200003, 1500200004



screw driver for spine
screw SW2.5

Product Code: 1500200005



open cone

Product Code: 1500200006



limit open cone

Product Code: 1500200009

Veterinary Spine Fixation System

Tools



anti-rotation sheath

Product Code: 1500200007



T-handle with AO adaptor

Product Code: 0301602001



rod holder

Product Code: 1500200010



extension forceps

Product Code: 1500200011



rod cutter

Product Code: 1500200012



rod pusher

Product Code: 1500200013



compression forceps

Product Code: 1500200014



torque handle 3.5NM

Product Code: 1500200015

Veterinary Spine Fixation System

Tools



screw forceps (Mini)

Product Code: 0201202001



tray (holds implants)

Product Code: 1500200017



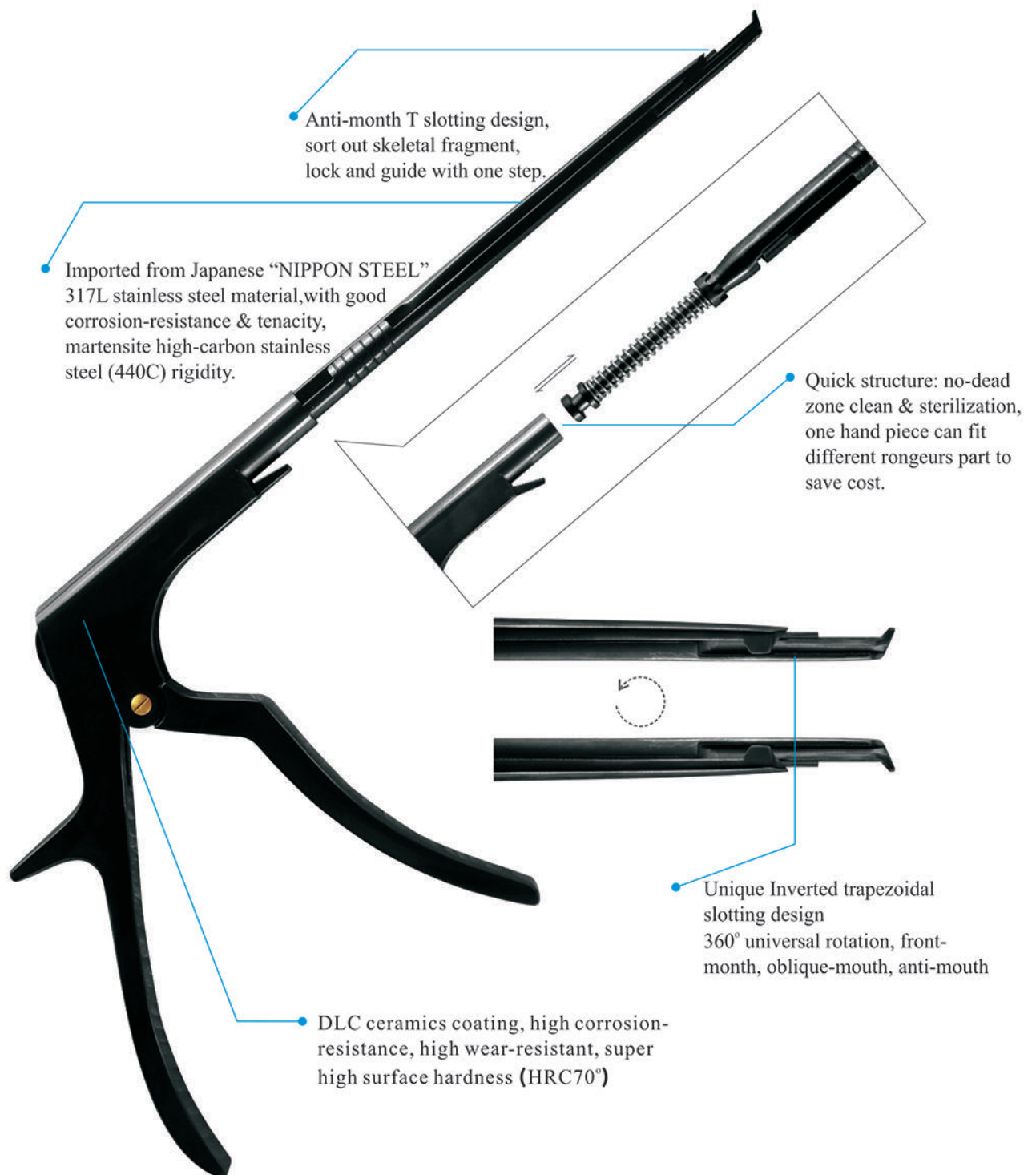
instrument container
(holds instruments)

Product Code: 1500200018

DLC exquisite type

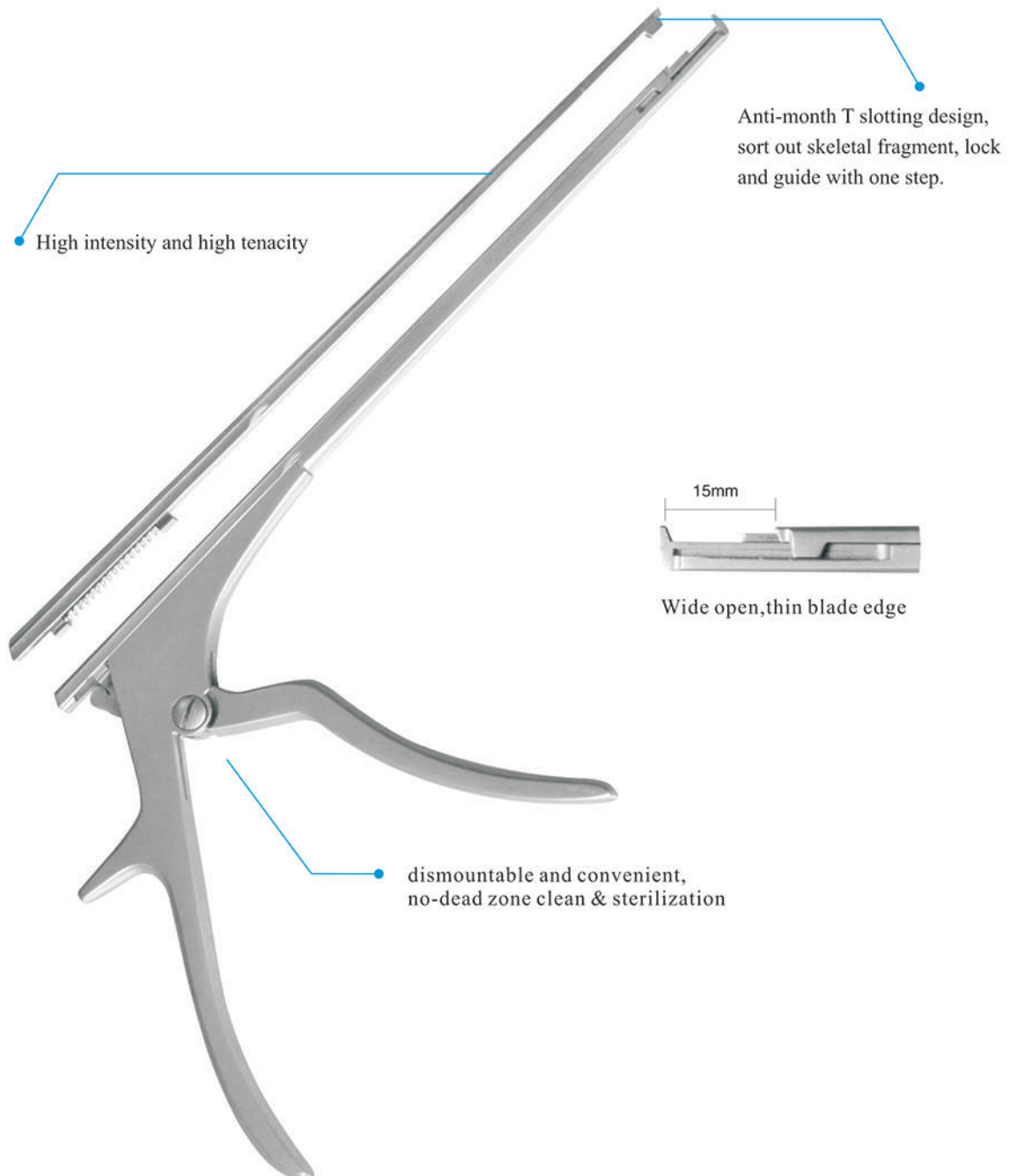
Universal laminectomy rongeurs

Products highly recommended by experts



Laminectomy rongeurs

Products highly recommended by experts



DLC exquisite type Laminectomy rongeurs



Rotatable laminectomy rongeurs

Art.No.	Length	Cut edge width	Angle
1000811090	220mm	1.0mm	90°
1000812090	220mm	2.0mm	90°
1000813090	220mm	3.0mm	90°
1000814090	220mm	4.0mm	90°
1000815090	220mm	5.0mm	90°



Rotatable laminectomy rongeurs

Art.No.	Length	Cut edge width	Angle
1000811110	220mm	1.0mm	110°
1000812110	220mm	2.0mm	110°
1000813110	220mm	3.0mm	110°
1000814110	220mm	4.0mm	110°
1000815110	220mm	5.0mm	110°



Rotatable laminectomy rongeurs

Art.No.	Length	Cut edge width	Angle
1000811130	220mm	1.0mm	130°
1000812130	220mm	2.0mm	130°
1000813130	220mm	3.0mm	130°
1000814130	220mm	4.0mm	130°
1000815130	220mm	5.0mm	130°

Laminectomy rongeurs



Rotatable laminectomy rongeurs

Art.No.	Length	Cut edge width	Angle
1000411090	220mm	1.0mm	90°
1000412090	220mm	2.0mm	90°
1000413090	220mm	3.0mm	90°
1000414090	220mm	4.0mm	90°
1000415090	220mm	5.0mm	90°



Rotatable laminectomy rongeurs

Art.No.	Length	Cut edge width	Angle
1000411110	220mm	1.0mm	110°
1000412110	220mm	2.0mm	110°
1000413110	220mm	3.0mm	110°
1000414110	220mm	4.0mm	110°
1000415110	220mm	5.0mm	110°



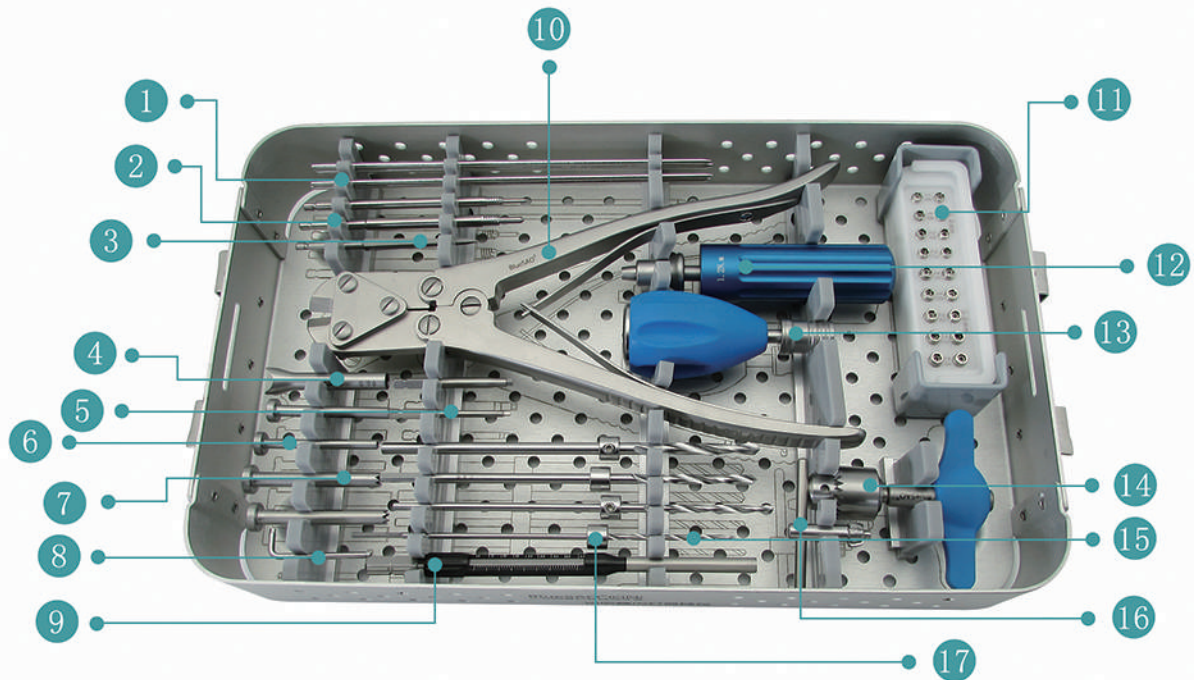
Rotatable laminectomy rongeurs

Art.No.	Length	Cut edge width	Angle
1000411130	220mm	1.0mm	130°
1000412130	220mm	2.0mm	130°
1000413130	220mm	3.0mm	130°
1000414130	220mm	4.0mm	130°
1000415130	220mm	5.0mm	130°



Interlocking Nail System

Interlocking Nail System



- | | |
|----------------------------------|------------------------------|
| 1: intramedullary pin | 10: wire cutting forceps |
| 2: tap, square shaft | 11: locking nail |
| 3: tapper | 12: torque screwdriver |
| 4: centralizer | 13: AO quick coupling handle |
| 5: screw driver (quick coupling) | 14: Pin insert handle |
| 6: drill sleeve | 15: drill bit |
| 7: drill sleeve (with sawtooth) | 16: Key |
| 8: drill stop spanner | 17: drill stop |
| 9: depth gauge | |

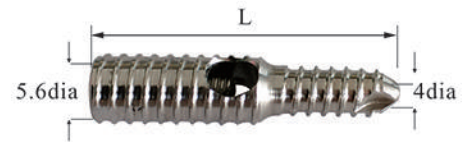
Interlocking Nail System Implants



4.8mm Locking nail

material: stainless steel

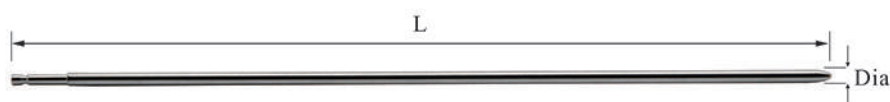
Length	Product Code
16mm	0800101016
18mm	0800101018
20mm	0800101020
22mm	0800101022



5.6mm Locking nail

material: stainless steel

Length	Product Code
16mm	0800102016
18mm	0800102018
20mm	0800102020
22mm	0800102022
24mm	0800102024



Intramedullary pin

Dia	L	Product Code
2.5mm	180mm	0800103001
3.0mm	180mm	0800103002

Interlocking Nail System

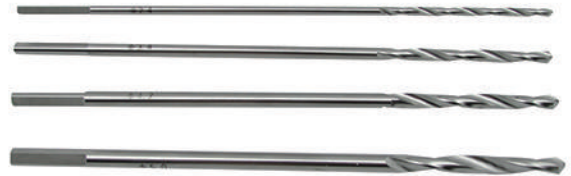
Tools



tap, square shaft

size : $\Phi 4.8$, $\Phi 5.6$

Product Code: 0800202001, 0800202002



drill bit

size : $\Phi 2.4$, $\Phi 3.4$, $\Phi 4.2$, $\Phi 5.0$

Product Code: 0800202003, 0800202004,
0800202005, 0800202006



drill stop

size : $\Phi 2.4$, $\Phi 3.4$, $\Phi 4.2$, $\Phi 5.0$

Product Code: 0800202018, 0800202019,
0800202020, 0800202021



torque screwdriver

size : 1.2N.M

Product Code: 0800202016



screw driver (quick coupling)

size : SW2.0, SW3.0

Product Code: 0800202007, 0800202008



drill sleeve

size : $\Phi 2.4$, $\Phi 3.4$

Product Code: 0800202009, 0800202010



drill sleeve(with sawtooth)

size : $\Phi 4.2$, $\Phi 5.0$

Product Code: 0800202011, 0800202012



Pin insert handle

Product Code: 0800202022

Interlocking Nail System

Tools



wire cutting forceps
size : $\Phi 3.0$
Product Code: 0800202017



centralizer
size: $\Phi 6.2$
Product Code: 0800202013



tapper
size: $\Phi 3.0$
Product Code: 0800202015



AO quick coupling handle
(silica gel handle)
Product Code: 0800202023



depth gauge
size: 40mm
Product Code: 0201302040



drill stop spanner
Product Code: 0200302100



implant tray
Product Code: 0800202024



instrument container
(holds instruments)
Product Code: 0800202025

Interlocking Nail System

BLUESAO® An chorlock System
 Vet x-ray Template (5% Magnification)

The diagram illustrates the BlueSAO An chorlock System components. It features two main sections, each with a 180mm scale bar and a corresponding nail. The top section is for a 2.5mm diameter nail, and the bottom section is for a 3.0mm diameter nail. Each section includes a vertical scale bar from 0 to 100mm, a long nail, and five locking screws of different lengths (16mm, 18mm, 20mm, 22mm, 24mm, 26mm, 28mm). The locking screws are shown in cross-section, highlighting their interlocking design.

Component	Length (mm)
Nail	180
Locking Screw	16
Locking Screw	18
Locking Screw	20
Locking Screw	22
Locking Screw	24
Locking Screw	26
Locking Screw	28

Nail Φ 2.5mm

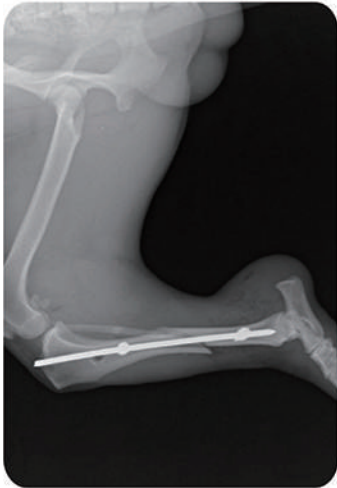
Nail Φ 3.0mm

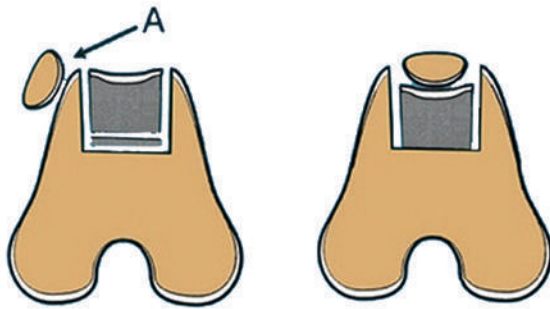
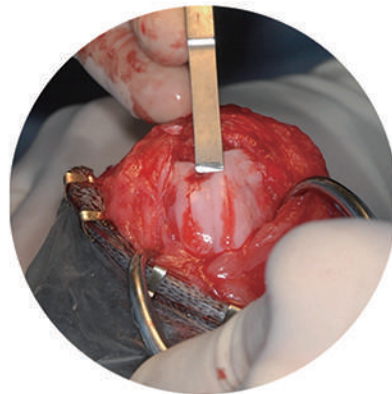
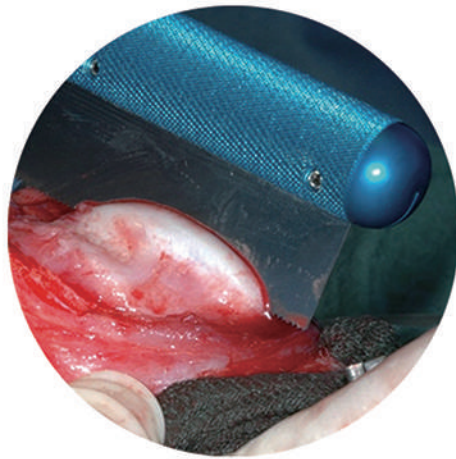
Locking Screw Φ 4.8mm

Locking Screw Φ 5.6mm

Interlocking Nail System

Clinical case:





Trochlea Plasty Instrument Set

Trochlea Plasty Instrument Set

Tools



osteotome



bone saw

Product Code: 0400302001



double-end straight rasper

Product Code: 0400402002



bone hammer

Product Code: 0400202001

W	Product Code
2mm	0400102002
3mm	0400102003
4mm	0400102004
6mm	0400102006
8mm	0400102008
10mm	0400102010
12mm	0400102012
15mm	0400102015



round rasper

Product Code: 0400402001



double-end curved rasper

Product Code: 0400402003

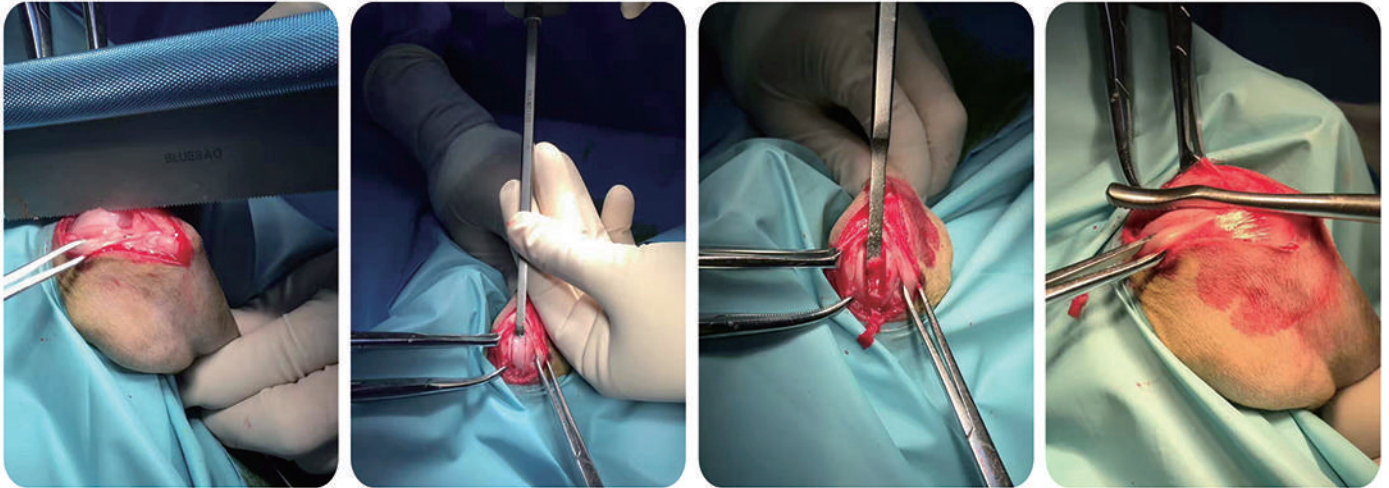


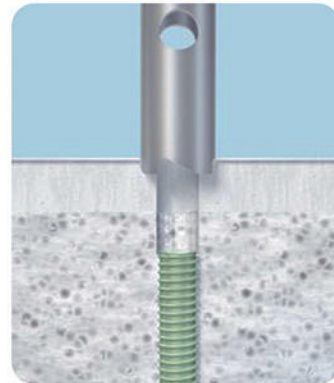
instrument container

Product Code: 0400502001

Trochlea Plasty Instrument Set

Clinical case:

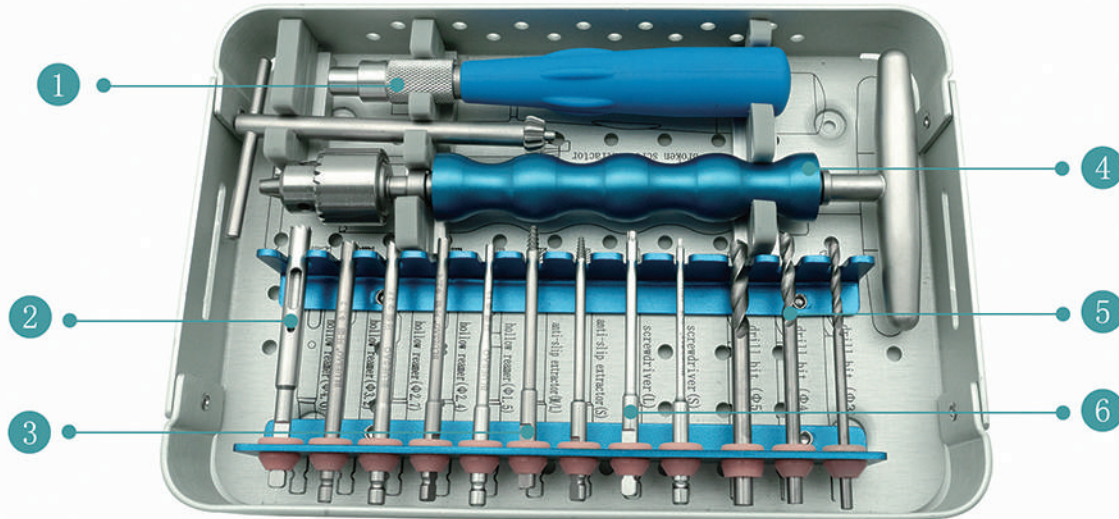




Broken Screw Removal Set

Instruments for removing BlueSAO screws

Broken Screw Removal Set



- 1: screwdriver handle
- 2: hollow reamer
- 3: anti-slip extractor

- 4: broken screw extractor
- 5: drill bit
- 6: screwdriver

Broken Screw Removal Set

Components



drill bit

Dia	Product Code
3mm	1000202010
4mm	1000202011
5mm	1000202012



hollow reamer

Dia	Product Code
1.5mm	1000202005
2.4mm	1000202006
2.7mm	1000202007
3.2mm	1000202008
4.0mm	1000202009



anti-slip extractor

size : S

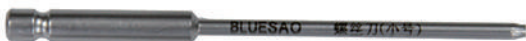
Product Code: 1000202003



anti-slip extractor

size : M/L

Product Code: 1000202004



screwdriver

size : S

Product Code: 1000202001



screwdriver

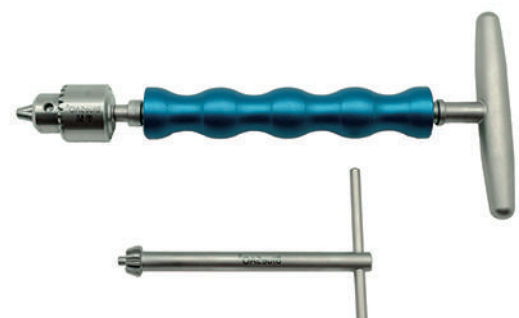
size : M/L

Product Code: 1000202002



screwdriver handle

Product Code: 0201102012



broken screw extractor

Product Code: 1000202013

Broken Screw Removal Set

Components



instrument box

Product Code: 1000202014

JIG



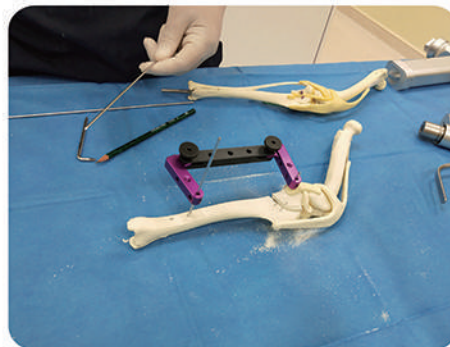
JIG (large)

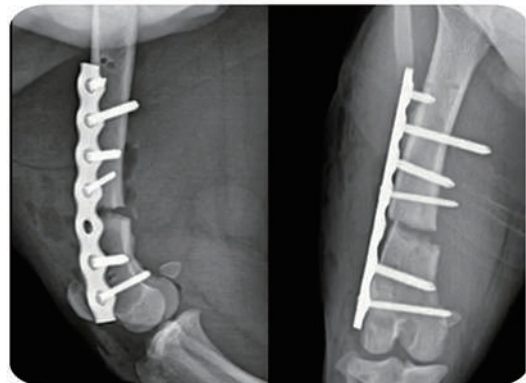
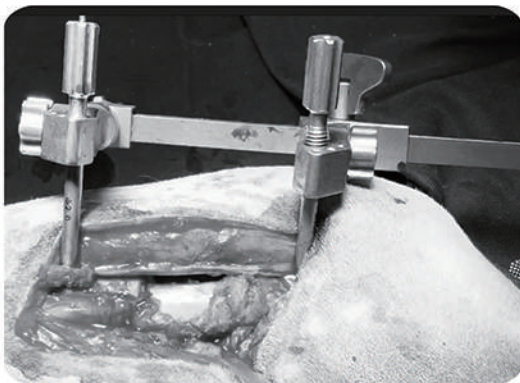
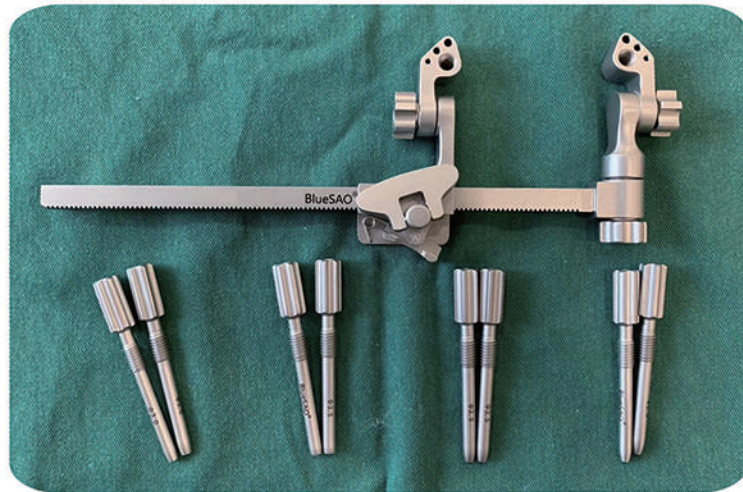
Product Code: 0206002002



JIG (small)

Product Code: 0206002001





MIO/MIPO Retractor

MIO/MIPO Retractor

Components



retractor

Product Code: 1801000001



wrench

Product Code: 1801000002



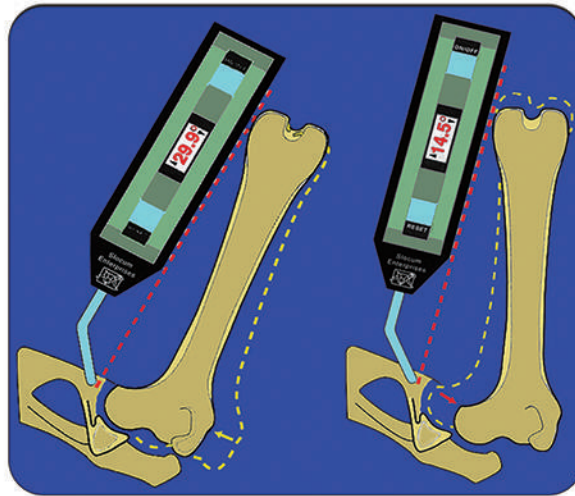
Dia	Product Code
2.0mm	1801000020
2.5mm	1801000025
3.0mm	1801000030
3.5mm	1801111135

pin sleeve



instrument container

Product Code: 1802000001



Canine Hip Dysplasia Examination Set

CHD Examination Set

Components



Veterinary Adjustable X-ray Radiographic Bracket

Product Code: 0600103002



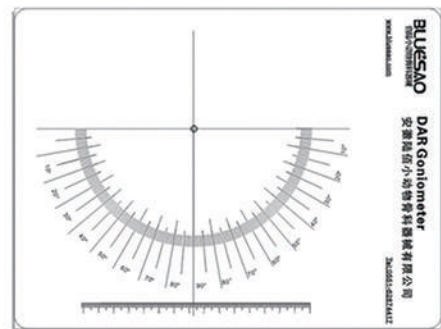
canine hip distractor

Product Code: 0600103001



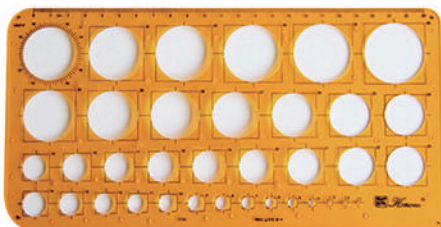
canine hip electronic goniometer

Product Code: 0600213001



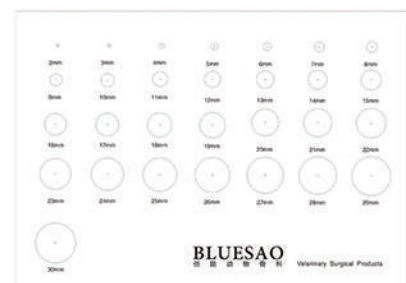
DAR goniometer

Product Code: 0600323003



center positioning ruler

Product Code: 0600323002



X-ray scale

Product Code: 0600323001

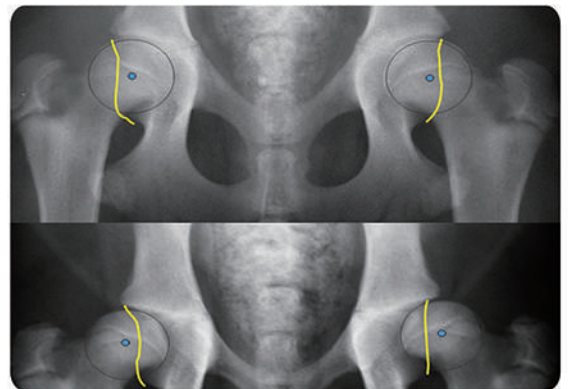
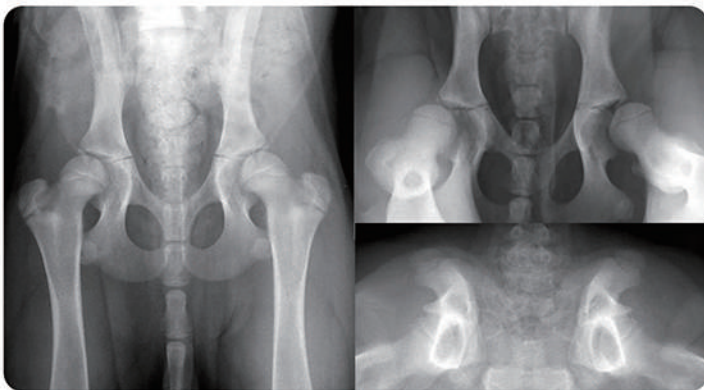
Prognosis for the development of HD according to the early signs

5 Severity classes of the early signs

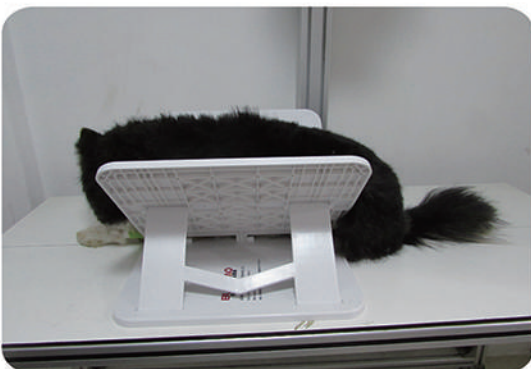
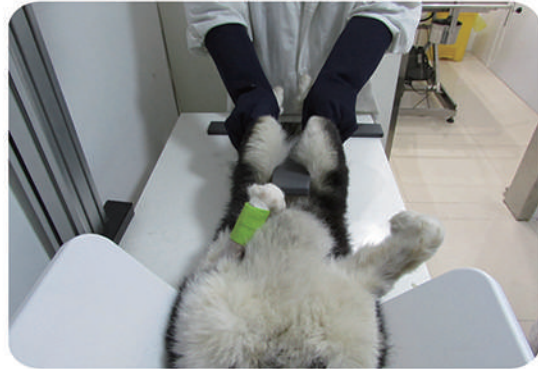
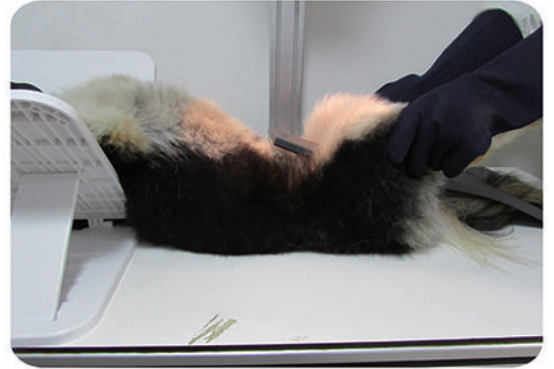
Risk Classes Early signs of susceptibility to CHD	FH centre	Frog view	DAR angle and shape	DI dolicho morphic breeds	DI meso morphic breeds	Ortolani	AR	AS	OA signs	Prognosis for CHD grade at adulthood
1.No signs	medial to DAR	congruent	0°-5° triangular shape	max 0.3	max 0.4	neg.	-	-	none	from A to B
2.Slight signs	Over the DAR	congruent	from 6° to 8° triangular shape	0.3-0.4	0.4-0.6	+	15°-25°	0°-5°	none	from B to C
3.Moderate signs	1mm lateral to the DAR	slight incongruent	from 9° to 12°mild rounding	0.5-0.6	0.6-0.75	++	26°-35°	6°-10°	very mild	from C to D
4.Severe signs	2mm lateral to the DAR	slight incongruent	from 13° to 15°mild rounding	0.6-0.7	0.75-0.9	+++	36°-45°	11°-20°	mild	from D to E
5.Very severe signs	markedly lateral	from moderate to severe incongruity	> 15°rounded or eroded border	>0.7	>0.8	+++	>30°	>20°	moderate to severe	E

CHD Examination Set

Early diagnosis of CHD	
Prognosis for the development of HD	
No signs, minimum risk	Grade A to Grade B
Minor severity signs, minor risk	Grade B to Grade C
Intermediate severity signs, moderate risk	Grade C to Grade D
Major severity signs, severe risk	Grade D to Grade E
Very severe signs, severe HD	Grade E



CHD Examination Set





Accurate Location Orthopedic Instrument

Accurate Location Orthopedic Instrument

Components



AL aiming reduction forceps

size : S, L

Product Code: 0301402004,301402005



Dia	Product Code
1.1mm	0301402011
1.5mm	0301402015
1.8mm	0301402018
2.0mm	0301402020
2.5mm	0301402025

drill sleeve of
aiming reduction forceps



AL bone holding
forceps(flat head)

Product Code: 0301402006



AL bone holding
forceps(embedded head)

Product Code: 0301402003



AL pointed reduction forceps

size : S, L

Product Code: 0301402001,0301402002



instrument tray

size : Accurate Location Instrument

Product Code: 0301402030

Accurate Location Orthopedic Instrument



AL bone holding forceps(flat head)

- Fix small plate.
- Mainpulate of fracture fragment to diseract and reduce.
- As a plastic forceps for PRCL-Mini locking plate system's bending jig for in-plane bending.



AL bone holding forceps(embedded head)

- Adjust the bone plate position,use it to fix the to bone plate.
- The design of round bites can lock bone plate position accurately.
- Protect thread in plate hole.



AL pointed reduction forceps(S/L)

- Reduce articular condyle fracture.
- Reduce oblique fracture .



AL aiming reduction forceps(S/L)

- Use aiming instruments to do lag screws of oblique fracture.
- Use aiming instruments to do lag screws of joint.
- Reduce cruciate ligament: use aiming instruments to punch hole in joint capsule.

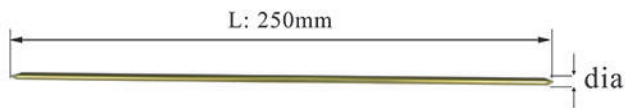




Orthopedic General Instrument

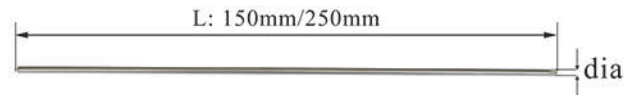
Orthopedic General Instrument

Implants



Titanium Alloy Kirschner wire double-end
material: titanium alloy

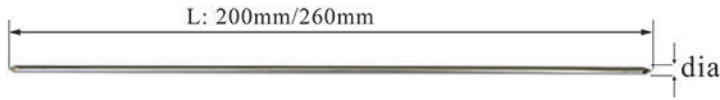
Dia	Product Code
1.5mm	0102101115
2.0mm	0102101120
2.5mm	0102101125
3.0mm	0102101130
3.5mm	0102101135



Stainless steel Kirschner wire single-end
material: stainless steel

Dia	Product Code
0.8mm	0102002008
1.0mm	0102002010
1.2mm	0102002012
1.5mm	0102002015
2.0mm	0102002020
2.5mm	0102002025
3.0mm	0102002030
3.5mm	0102002035

Orthopedic General Instrument Implants



Stainless steel Kirschner wire double-end
material: stainless steel

Medical wire

Dia	Product Code
0.8mm	0102002108
1.0mm	0102002110
1.2mm	0102002112
1.5mm	0102002115
2.0mm	0102002120
2.5mm	0102002125
3.0mm	0102002130
3.5mm	0102002135

Dia	Product Code
0.6mm	0103002006
0.8mm	0103002008
1.0mm	0103002010
1.2mm	0103002012

Orthopedic General Instrument

Tools



rongeur,mix articulation

size : 180mm,220mm, cutting edge 3mm

Product Code: 0300302010,0300302011



rongeur,single joint

size : 155mm,cutting edge 3mm

Product Code: 0300302001



bone holding forceps

size : S:155mm, M:170mm, L:185mm

Product Code: 0300102001,0300102002,
0300102003



automatic centralized bone holding forceps

size : S:150mm, L:190mm

Product Code: 0300102011,0300102012



reduction forceps, round head with a sharp

size : 160mm

Product Code: 0300202010



reduction forceps, pointed-tip

size : S:160mm,L:195mm

Product Code: 0300202001,0300202002



periosteal dissector,double-end

size : 170mm, cutting edge 3mm

Product Code: 0300502002



periosteal dissector,double-end

size : 170mm, cutting edge 6mm/8mm

Product Code: 0300502003

Orthopedic General Instrument

Tools



drag hook

size : 190mm,S:D=20mm:L:D=30mm
Product Code: 0300602001,0300602002



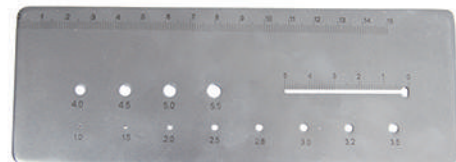
Bone skid

size : S:210m,L:240mm
Product Code: 0300702001,0300702002



Bone finger skid

size : S:170mm,M:170mm
Product Code: 0300702003,0300702004



multifunction orifice

size : measure the length and diameter of screws
Product Code: 0300802001



hant spoon

size : Mini:230mm,S:230mm,L:230mm
Product Code:1300101005,1300101004,
1300101003



hoffman retractor

size : S:100mm,L:150mm
Product Code:1300101001,1300101002



wire cutter oblique jaw(large)

size : L=180mm
cut steel wires that are not beyond ϕ 1.2mm
Product Code: 0300402011



wire cutter oblique jaw(topcut)

size : L=225mm
cut steel wires that are not beyond ϕ 2.0mm
Product Code: 0300402012

Orthopedic General Instrument

Tools



wire cutter,mix articulation

size : L=250mm

Product Code: 0300402013



small force shear

size : for cutting bone plate,k-wires,
medical wire,no big than $\phi 3\text{mm}$

Product Code: 0300902001



strong shear

size : for cutting bone plate,k-wires,
medical wire,no big than $\phi 6\text{mm}$

Product Code: 0300902002



kirschner wire cutter

size : L=205mm,cut-wires that are
 $\phi 1.5\text{mm}$ 、 $\phi 2.0\text{mm}$ 、 $\phi 2.5\text{mm}$

Product Code: 0301002001



kirschner wire bender

size : $\phi 1.2\text{mm}/\phi 1.5\text{mm}$
 $\phi 2.0\text{mm}/\phi 2.5\text{mm}$

Product Code: 0301002011,0301002012



bone hammer

Product Code: 0400202001



square osteotome (silica gel handle)

size : L=280mm, cutting edge 15mm

Product Code: 0301702001



kern bone holding forcep(large)

Product Code: 0300102020

Orthopedic General Instrument

Tools



kern bone holding forcep (small)

Product Code: 0300102021



tapping cone

size : L=248mm, Φ 4.0mm

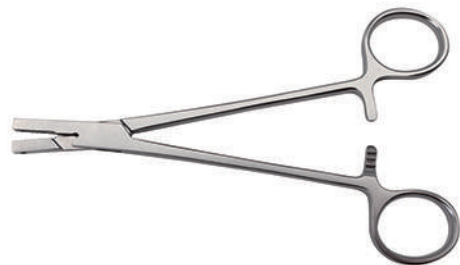
Product Code: 0301302001



tie wire device

size : L=240mm, (dual knobs)

Product Code: 0301102001



multifunctional wire-scissors

size : L=155mm, cut steel wires that are not beyond Φ 0.8mm

Product Code: 0300402002



countersink drill bit

size : Φ 3.0mm, Φ 4.0mm

Product Code: 0301602002, 0301602003



spay hook

size : L=175mm

Product Code: 0300602003



gelpi retractor (small)

size : L=100mm

Product Code: 0301202001



gelpi retractor (big)

size : L=150mm

Product Code: 0301202002

Orthopedic General Instrument

Tools



wire cutter(flat)

size : L=200mm
cut steel wires that are not beyond $\varphi 2.0\text{mm}$

Product Code: 0300402001



wire director

Product Code: 0301102002



drill bit

size : $\Phi 1.1$, $\Phi 1.5$, $\Phi 1.8$, $\Phi 2.0$,
 $\Phi 2.5$, $\Phi 2.7$, $\Phi 3.2$

Product Code: 0200202011,0200202015,
0200202018,0200202020,
0200202025,0200202027,
0200202032



drill bit(quick coupling)

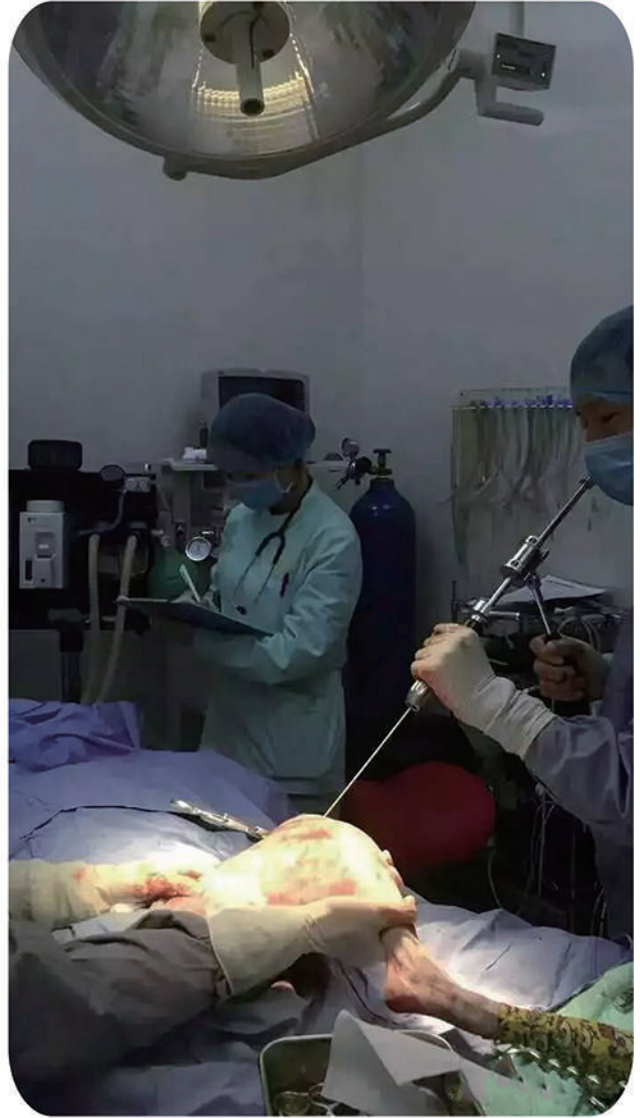
size : $\Phi 0.7$, $\Phi 1.1$, $\Phi 1.5$, $\Phi 1.8$, $\Phi 2.0$,
 $\Phi 2.4$, $\Phi 2.5$, $\Phi 2.7$, $\Phi 3.2$, $\Phi 3.5$

Product Code: 0200102007,0200102011,
0200102015,0200102018,
0200102020,0200102024,
0200202025,0200102027,
0200102032,0200102035



kirschner wire rack

Product Code: 0301002013



Intramedullary Pin Installation And Removal Set

Intramedullary Pin Installation And Removal Set

Tools



gripping pliers for intramedullary nail

Product Code: 1000102002



special chuck (include spanner)

Product Code: 1000102003



driver-extractor rotary-screw

Product Code: 1000102004



slide hammer

Product Code: 1000102005



Power Tool

Power Tool System

Components



hollow drill (large)

Product Code: 0500322003

accessories	
handpiece×1	jacob chuck×1
batteries×2	keys×1
recharger×1	sterilizing tray×1



hollow drill (small)

Product Code: 0500322004

accessories	
handpiece×1	key×1
batteries×2	connector×1
recharger×1	sterilizing tray×1



oscillating saw (3 saw blades for free)

Product Code: 0500222001

accessories	
handpiece×1	saw blades×3
batteries×2	sterilizing tray×1
recharger×1	



**multi-function drill saw
(4 chucks: normal drill head,
quick coupling drill head,
oscillating saw head, k-wire head)**

Product Code: 0500122001,0500122002,0500122004,
0500122003,0500122005

accessories	
handpiece×1	connector
batteries×2	sterilizing tray×1
recharger×1	saw blades×3
common connector×1	key×1
quick-changing×1	

TPLO Saw System

Components



saw blade

Size	Product Code
R8	0501322001
R10	0501322002
R12	0501322003
R15	0501322004
R18	0501322005
R21	0501322006
R24	0501322007
R27	0501322008
R30	0501322009
R33	0501322010

TPLO Saw System

Components



handpiece

Product Code: 0500522001



locking screw nut



charge



sterilize circle

accessories	
handpiece×1	battery×2
saw blade (any size,you can choose)	charge×1
locking screwdriver×2	sterilize circle×2
locking screw nut×2	



locking screwdriver



battery

Bone Model



femur(large)

Product Code: 0900223001



femur(small)

Product Code: 0900223007



tibia-fibula

Product Code: 0900223005



humerus

Product Code: 0900223002



radius(large)

Product Code: 0900223003



radius(small)

Product Code: 0900223008



knee joint

Product Code: 0900313001



pelvis

Product Code: 0900223006

BlueSAO[®]

BLUESAO Co.,Ltd

Address: 3th Floor, West of Building J11, Mechatronic Industrial Park,
No. 767 Yulan Avenue, High-tech Zone, Hefei city, Anhui Province, China

Tel: + 8655162873417
+ 8655162874417

E-mail: amyxu@bluesao.com

Website: www.bluesao.com/en/